



## King Henrys Road, Primrose Hill, London, NW3 .| £808

- Funky
- Modern
- Amazing location
- Wooden Floors

- Close to Chalk Farm and Swiss Cottage Tube
- Available 27 July 2021

"Vita Properties have been tremendously helpful throughout the process of securing/renting my flat. Informative about the property, prompt communication, easy to use dashboard for sharing of information, and pleasant to work with. Highly recommend!"

Available 27 July 2021 is this beautiful three double bedroom, two bathroom (one en-suite) flat, located just a short walk from Primrose Hill and England's Lane.

The property benefits from period features throughout ample storage, wooden floors and beautiful views over a Victorian style road. Viewings are highly recommended on this fantastic split level flat. The property is offer furnished or unfurnished.



Oliver Kent

✉ [oliver.kent@vitaproperties.uk](mailto:oliver.kent@vitaproperties.uk)

☎ +4477 7274 0351

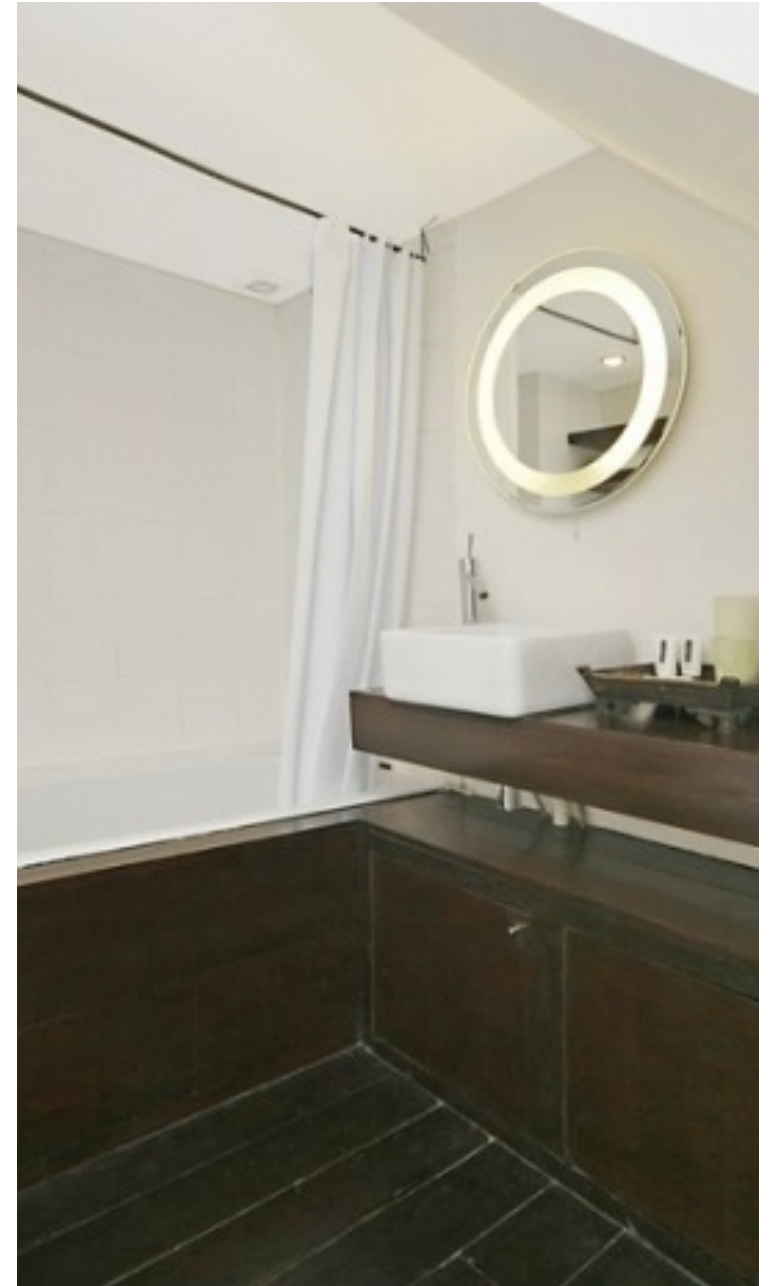


🏠	Flat
🔑	Available to Let
🛏️	x 3
🛋️	x 1
🚿	x 1



"I was very impressed with Vita and their network of buyers. When the sale of my flat fell through (twice) they worked extremely hard to find new buyers in a difficult market - thank you!"

---



"Working with Vita properties has been a smooth experience! No complaints at all. Our letting agent, Diana has been fantastic and very helpful throughout the whole process. I would highly recommend both Vita properties and Diana."

---



"I used Vita properties to find a flat recently and it was an overall professional, personalised and positive experience. Saira went the extra mile to accommodate to our needs and quick to help us whenever possible."

---



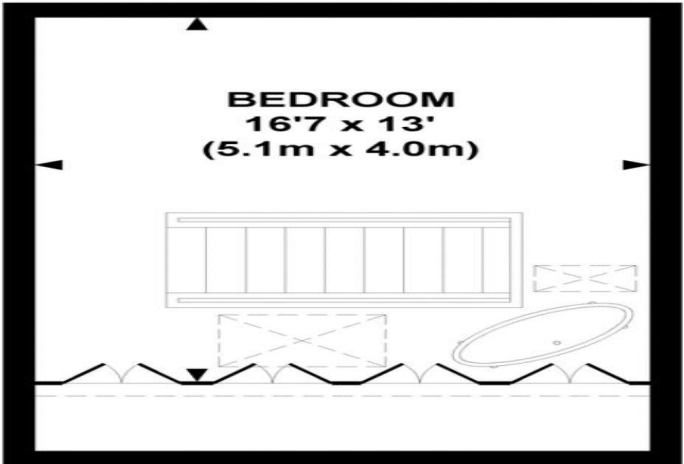
**MORE INFO, PICTURES,  
CONTACT ON  
OUR WEBSITE**



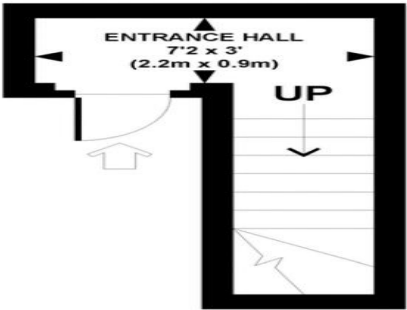




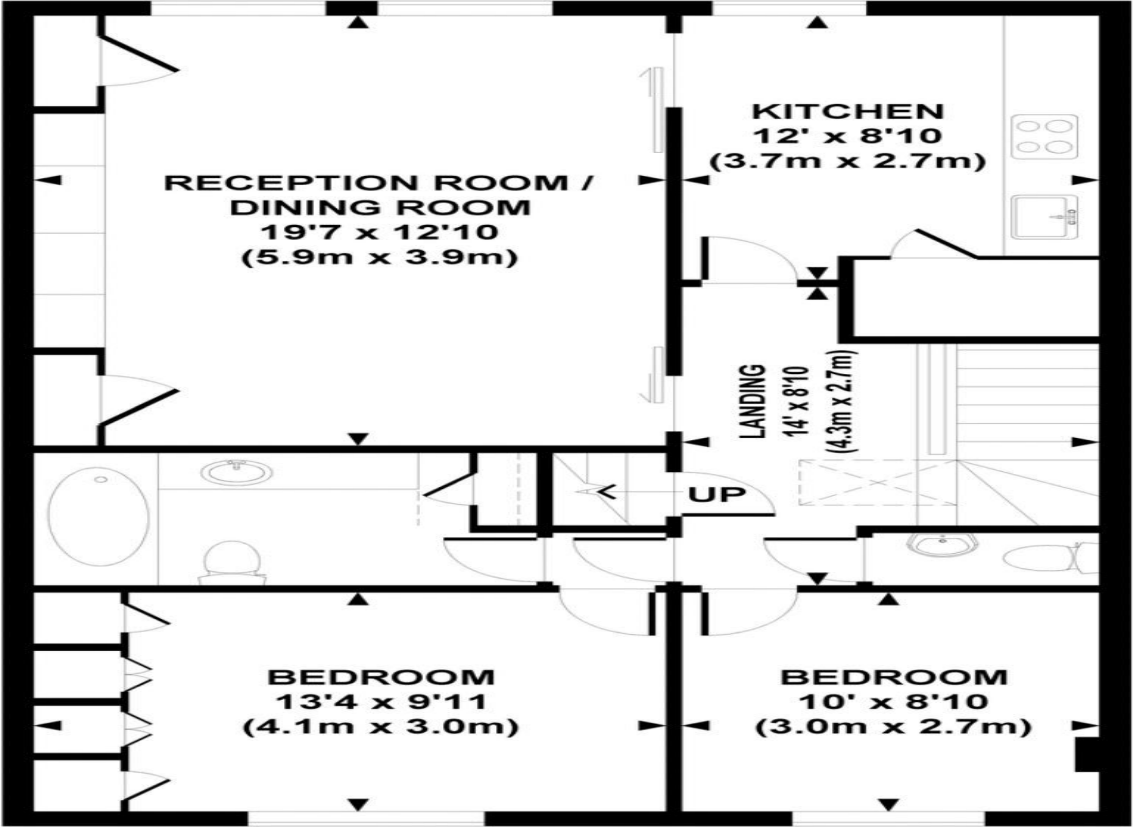
Approx. gross internal area  
1089 Sq.Ft. / 101.2 Sq.M.  
1121 Sq.Ft. / 104.1 Sq.M. Inc. Restricted Height Area



THIRD FLOOR



FIRST FLOOR



SECOND FLOOR