



Greencroft Gardens, South Hampstead, London, NW6 .| £515

- Modern
- Wooden Floors
- 2 bathrooms
- Private patio

- Available 28 June 2017
- Council tax - D - £1325 per annum

"Vita Properties have been tremendously helpful throughout the process of securing/renting my flat. Informative about the property, prompt communication, easy to use dashboard for sharing of information, and pleasant to work with. Highly recommend!"

Available 28 June 2017 - An excellent 2 bedroom 2 bathroom garden level apartment in this mansion block on the upper part of Greencroft Gardens. Backing on to 3 acre communal gardens in the heart of the South Hampstead conservation area. Private entrance and patio area. Tastefully refurbished with wood floors. Wonderful reception stunning kitchen, fitted wardrobes in both bedrooms, beautiful modern bathrooms and a guest w/c. Ideal for Finchley Road, Swiss Cottage & West Hampstead stations.



Oliver Kent

✉ oliver.kent@vitaproperties.uk
☎ +4477 7274 0351



🏠	Flat
🔑	Available to Let
🛏️	x 2
🛋️	x 1
🚽	x 2

"I was very impressed with Vita and their network of buyers. When the sale of my flat fell through (twice) they worked extremely hard to find new buyers in a difficult market - thank you!"



"Working with Vita properties has been a smooth experience! No complaints at all. Our letting agent, Diana has been fantastic and very helpful throughout the whole process. I would highly recommend both Vita properties and Diana."

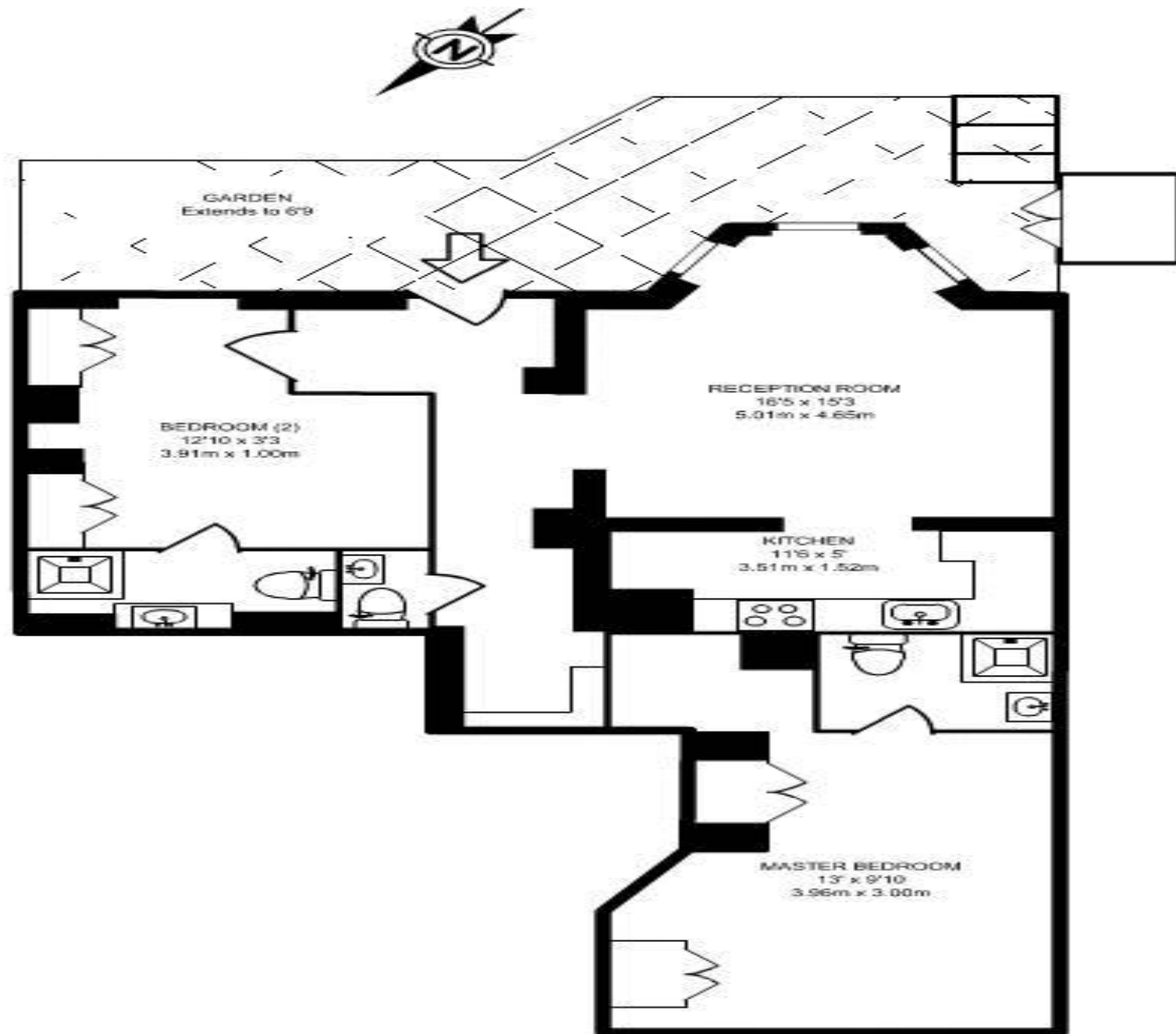


"I used Vita properties to find a flat recently and it was an overall professional, personalised and positive experience. Saira went the extra mile to accommodate to our needs and quick to help us whenever possible."



**MORE INFO, PICTURES,
CONTACT ON
OUR WEBSITE**





LOWER GROUND FLOOR GROSS INTERNAL FLOOR AREA
690 SQ FT/64.10 SQ M