



Edis Street, Primrose Hill, London, NW1. | £515

- Newly refurbished
- Wooden floors
- Patio garden
- Seconds to Primrose Village

- Guest WC
- Council tax - D - £1325 per annum

"Vita Properties have been tremendously helpful throughout the process of securing/renting my flat. Informative about the property, prompt communication, easy to use dashboard for sharing of information, and pleasant to work with. Highly recommend!"

We are delighted to offer this brand newly refurbished two double bedroom garden flat situated in the centre of Primrose Hill village. With wood floors throughout, accommodation comprises: open-plan reception/kitchen with white gloss units and feature fireplace; guest WC and utility room offering fantastic storage in the properties converted vaults; master bedroom with en suite bathroom with separate shower cubicle; second double bedroom with en suite shower. Both bedrooms open onto a private rear courtyard garden.

Available now



Oliver Kent

✉ oliver.kent@vitaproperties.uk

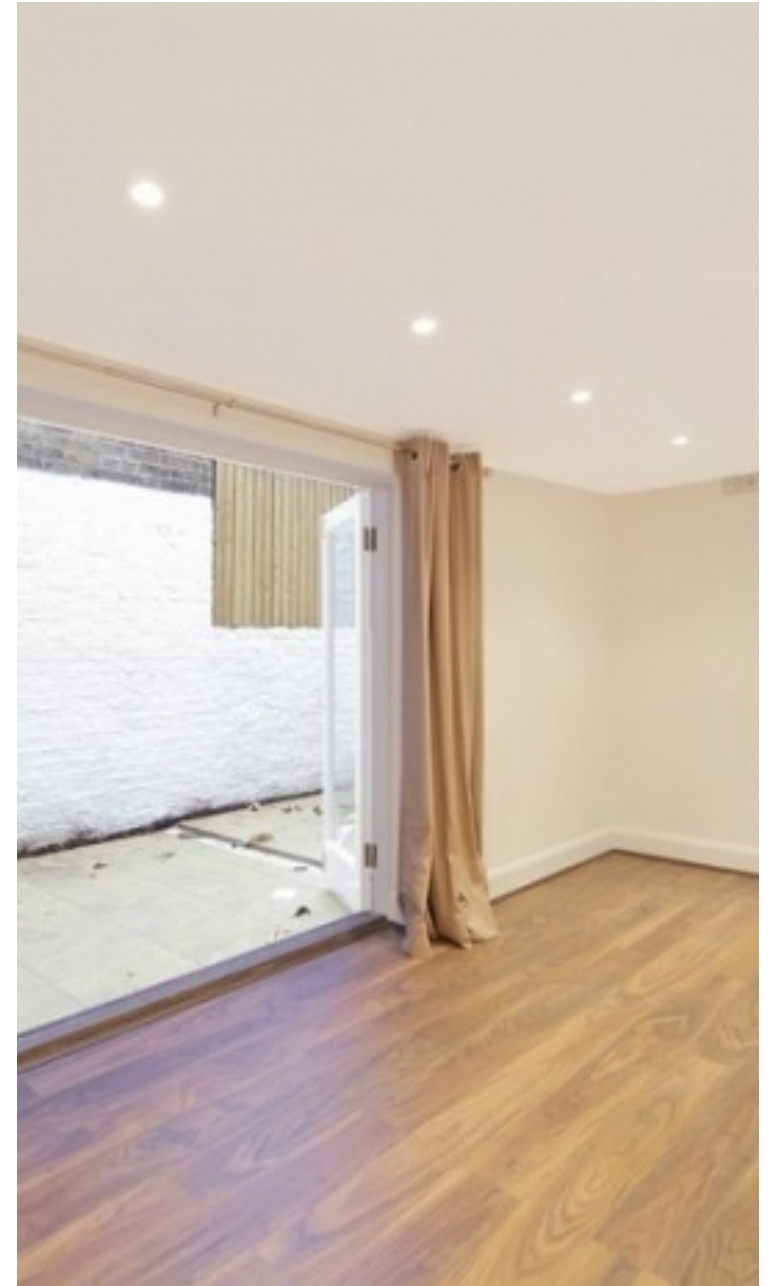
☎ +4477 7274 0351



🏠	Flat
🔑	Available to Let
🛏️	x 2
🛋️	x 1
🚽	x 2



"I was very impressed with Vita and their network of buyers. When the sale of my flat fell through (twice) they worked extremely hard to find new buyers in a difficult market - thank you!"



"Working with Vita properties has been a smooth experience! No complaints at all. Our letting agent, Diana has been fantastic and very helpful throughout the whole process. I would highly recommend both Vita properties and Diana."



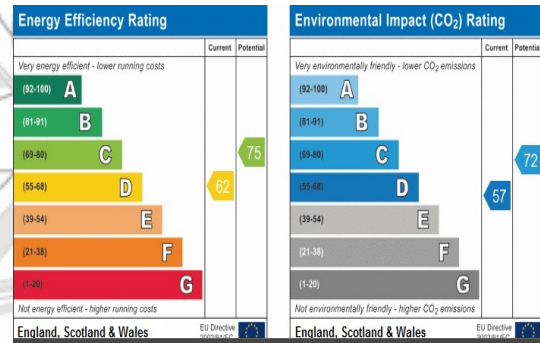
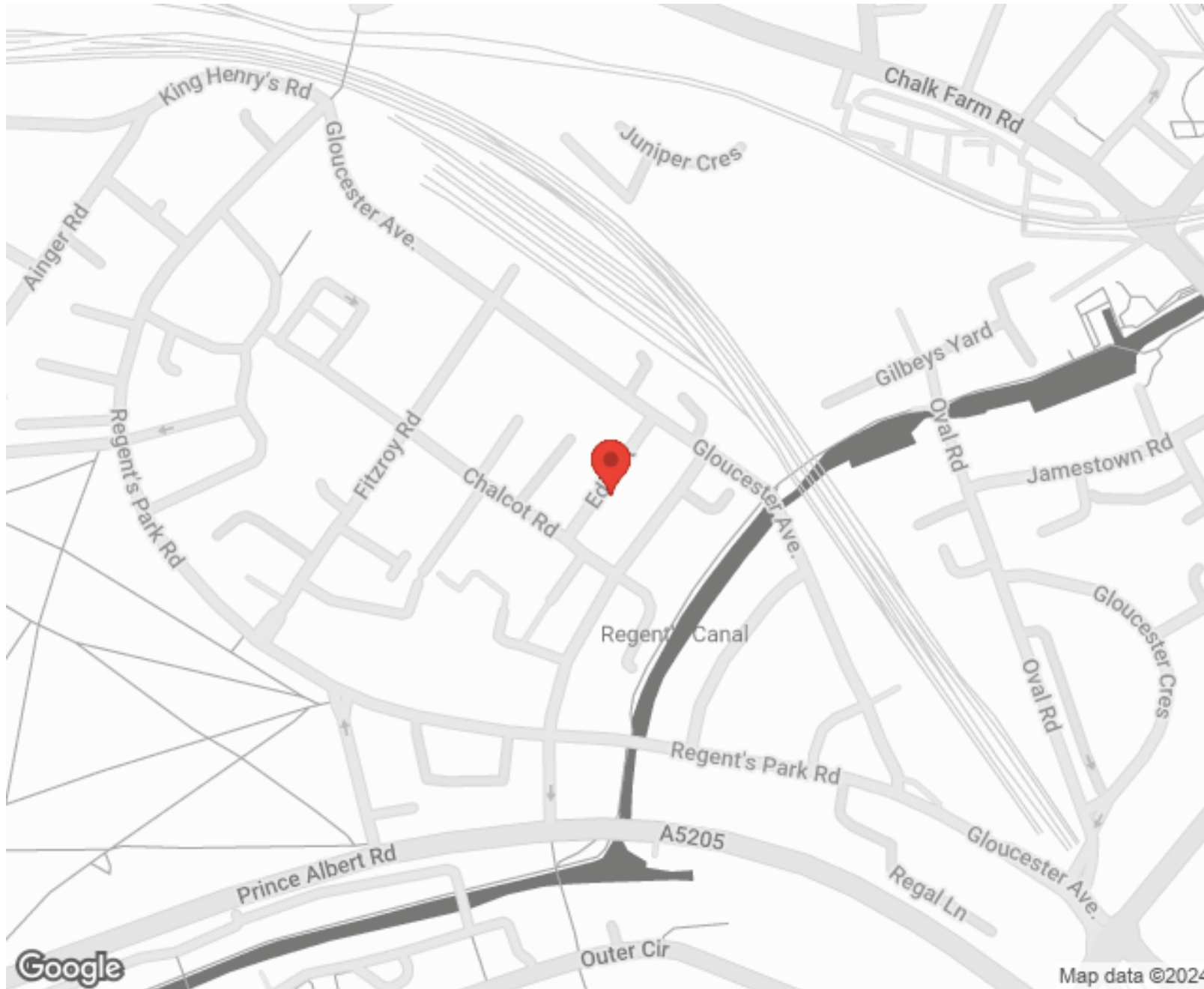
"I used Vita properties to find a flat recently and it was an overall professional, personalised and positive experience. Saira went the extra mile to accommodate to our needs and quick to help us whenever possible."



**MORE INFO, PICTURES,
CONTACT ON
OUR WEBSITE**



"Vita Properties is a very professional agency. My experience with them was incredible and the entire team was very helpful and kind throughout the renting process. I'd highly recommend!"



SCAN FOR MORE GOOGLE REVIEWS






Google



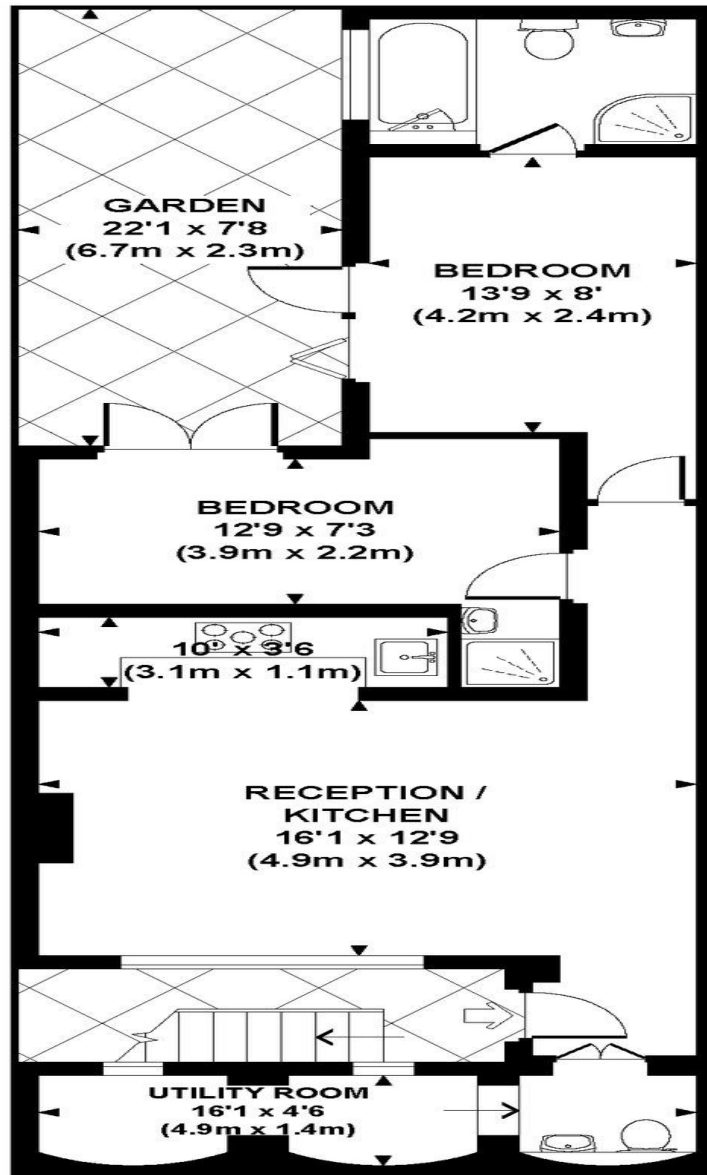
4.9 Stars | 132 Reviews

Find us on social media

-  vitaproperties
-  VitaProperties
-  VitaProperties



Approx. gross internal area
672 Sq Ft. / 62.5 Sq M.



LOWER GROUND FLOOR