



Templewood Avenue, Hampstead, London, NW3 .| £795

- First Floor
- Wooden Floors
- Modern
- Within close proximity to Hampstead Village

- OSP
- Available 01 April 2015

"Vita Properties have been tremendously helpful throughout the process of securing/renting my flat. Informative about the property, prompt communication, easy to use dashboard for sharing of information, and pleasant to work with. Highly recommend!"

Available 1st April - A spacious first floor apartment (approx. 1,000 sq.ft.) forming part of an ambassadorial residence moments from The Heath and approx. 10-12mins to Hampstead Village. The property comprises spacious reception room with a large private terrace overlooking the stunning communal gardens, modern fitted kitchen with granite worktops, 3 bedrooms (2 doubles & single/study room) and 2 bathrooms (1 en suite). Further benefits include wood floors throughout, communal heating & hot water, off street parking & stunning communal gardens.



Oliver Kent

✉ oliver.kent@vitaproperties.uk
☎ +4477 7274 0351



🏠 Flat
🔑 Available
to Let
🛏 x 3
🛋 x 1
🚿 x 2



"I was very impressed with Vita and their network of buyers. When the sale of my flat fell through (twice) they worked extremely hard to find new buyers in a difficult market - thank you!"



"Working with Vita properties has been a smooth experience! No complaints at all. Our letting agent, Diana has been fantastic and very helpful throughout the whole process. I would highly recommend both Vita properties and Diana."



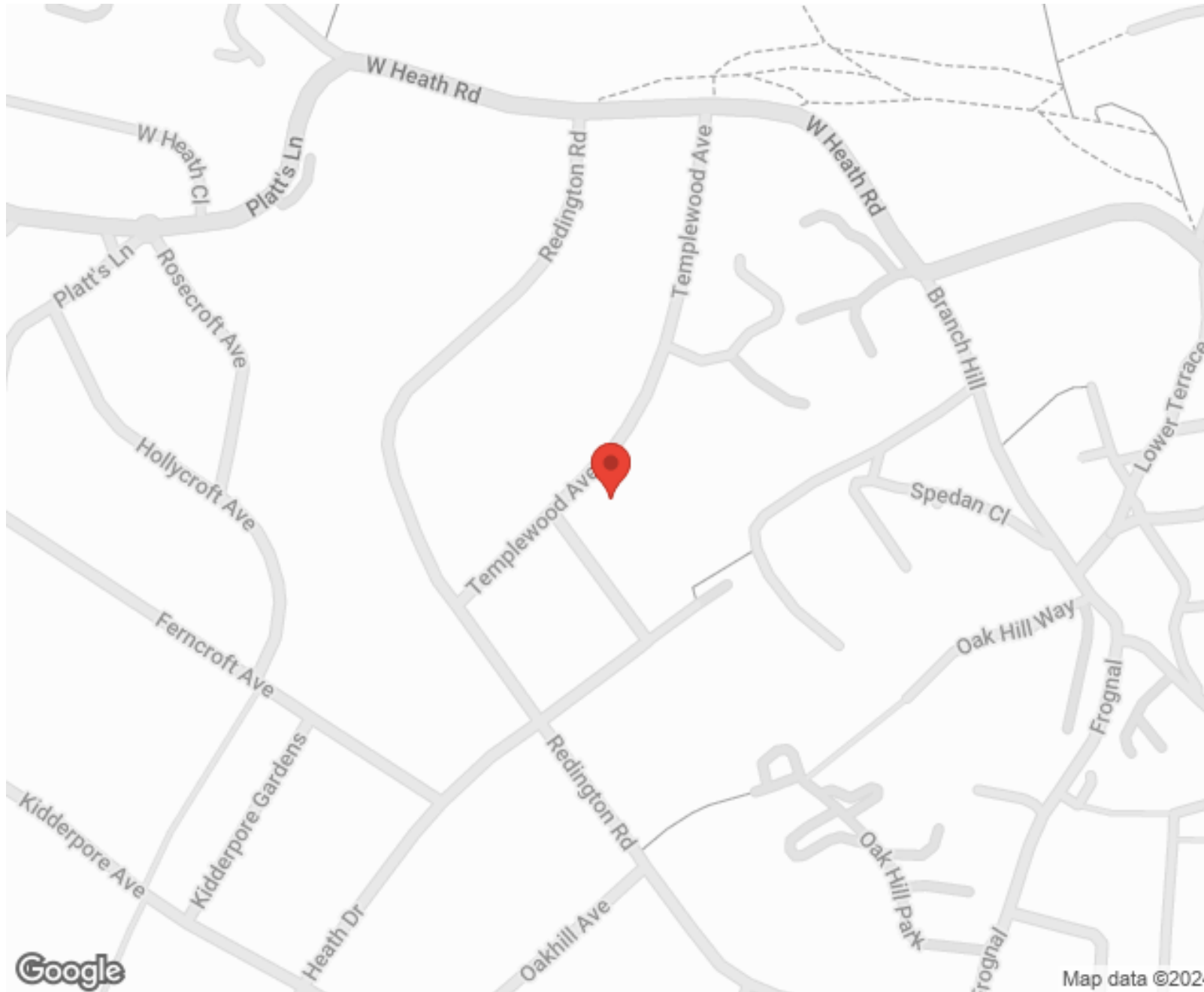
"I used Vita properties to find a flat recently and it was an overall professional, personalised and positive experience. Saira went the extra mile to accommodate to our needs and quick to help us whenever possible."



**MORE INFO, PICTURES,
CONTACT ON
OUR WEBSITE**



"Vita Properties is a very professional agency. My experience with them was incredible and the entire team was very helpful and kind throughout the renting process. I'd highly recommend!"



SCAN FOR MORE
GOOGLE REVIEWS



Google



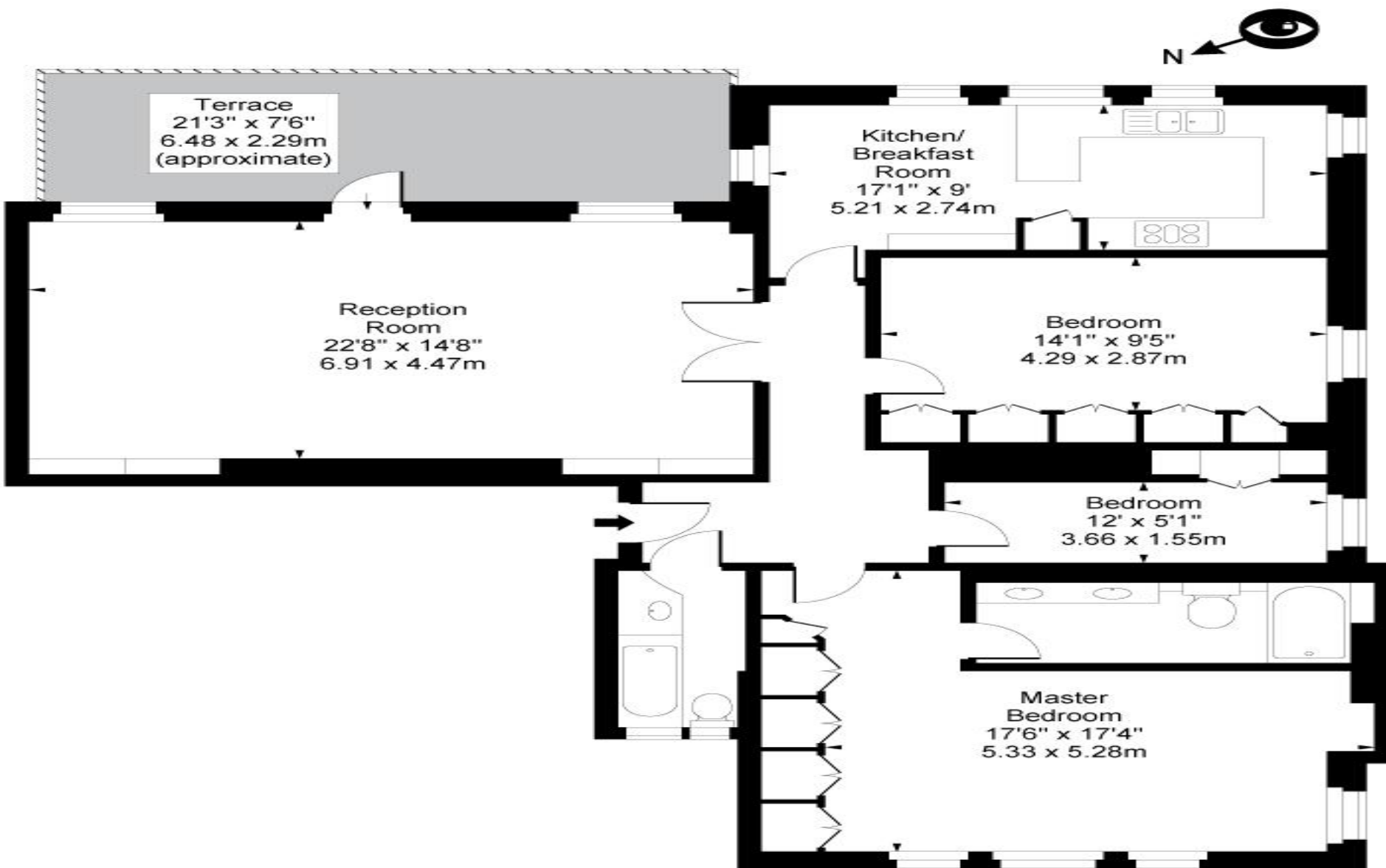
4.9 Stars | 132 Reviews

Find us on social media

 vitaproperties

 VitaProperties

 VitaProperties



First Floor

Approx Gross Internal Area 1296 Sq Ft - 120.40 Sq M

For Illustration Purposes Only - Not To Scale