



## Priory Terrace, South Hampstead, London, NW6 .| £750

- Garden
- Newly Refurbished
- Modern Fitted Kitchen
- 3 bathrooms

- Close to tube and shops
- Council tax - D - £1325 per annum
- Available immediately

"Vita Properties have been tremendously helpful throughout the process of securing/renting my flat. Informative about the property, prompt communication, easy to use dashboard for sharing of information, and pleasant to work with. Highly recommend!"

An elegant 3 bedroom ground floor family home, newly refurbished to a very high standard.

Set on a residential road close to South Hampstead, the property has been carefully planned to maximise space and has been fully extended to the rear to create a delightful conservatory style area. It boasts a private garden, 3 double bedrooms (one with en-suite shower), a family bathroom, utility area and an open plan kitchen leading onto a generous sized, bright and airy lounge and dining room.

Available now. Offered unfurnished.



Oliver Kent

✉ [oliver.kent@vitaproperties.uk](mailto:oliver.kent@vitaproperties.uk)

☎ +4477 7274 0351



🏠	Flat
🔑	Available to Let
🛏️	x 3
🛋️	x 1
🚿	x 2



"I was very impressed with Vita and their network of buyers. When the sale of my flat fell through (twice) they worked extremely hard to find new buyers in a difficult market - thank you!"

---



"Working with Vita properties has been a smooth experience! No complaints at all. Our letting agent, Diana has been fantastic and very helpful throughout the whole process. I would highly recommend both Vita properties and Diana."

---



"I used Vita properties to find a flat recently and it was an overall professional, personalised and positive experience. Saira went the extra mile to accommodate to our needs and quick to help us whenever possible."

---

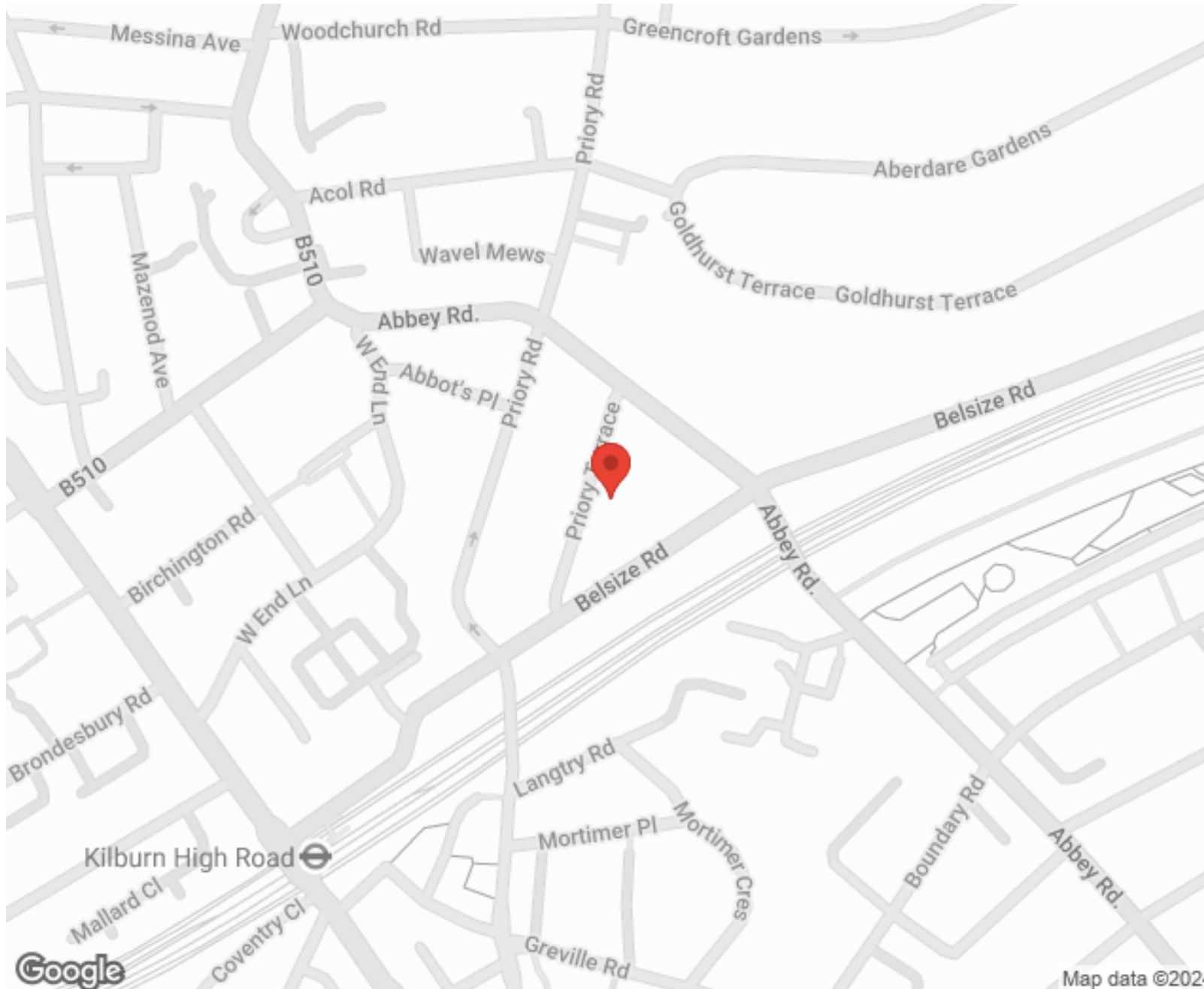


**MORE INFO, PICTURES,  
CONTACT ON  
OUR WEBSITE**



"Vita Properties is a very professional agency. My experience with them was incredible and the entire team was very helpful and kind throughout the renting process. I'd highly recommend!"

---



SCAN FOR MORE  
GOOGLE REVIEWS



Google



4.9 Stars | 132 Reviews

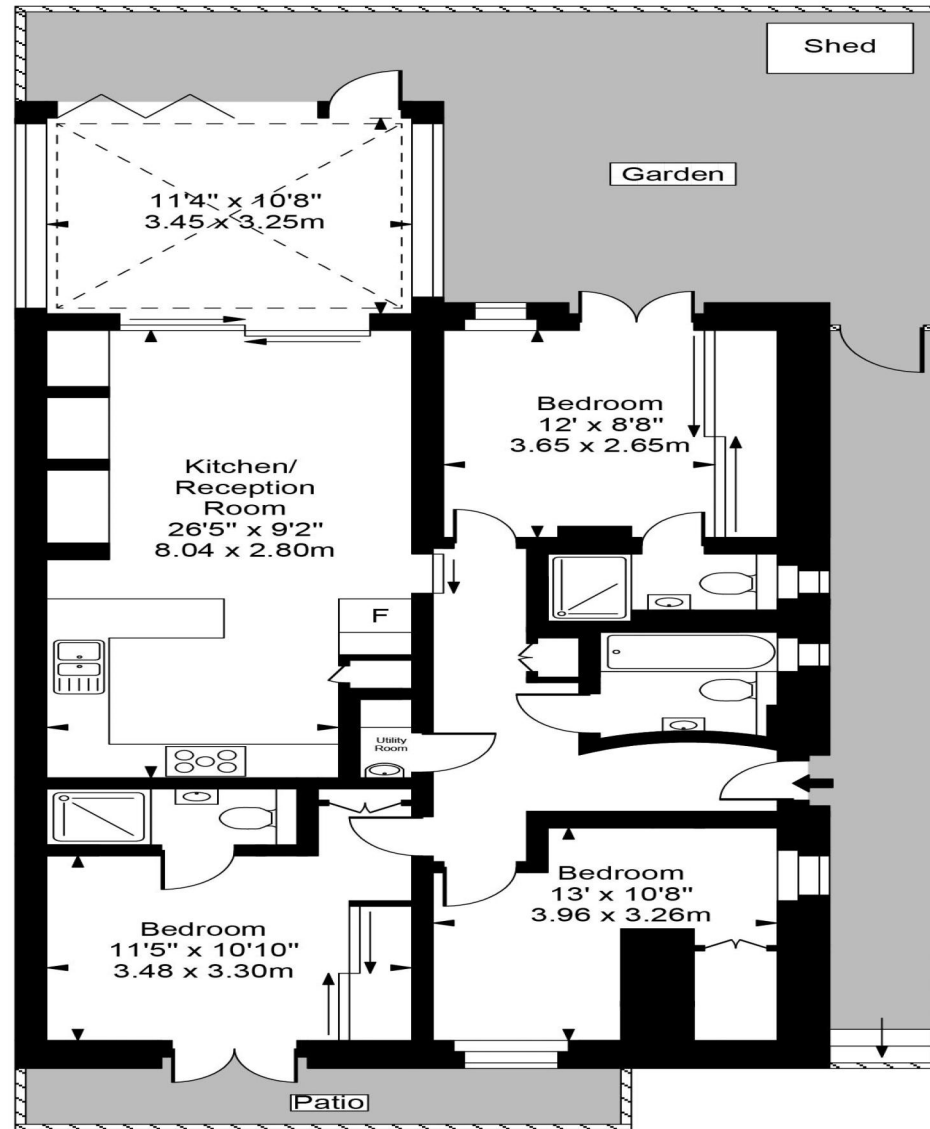
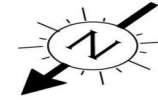
Find us on social media

 vitaproperties

 VitaProperties

 VitaProperties

# Priory Terrace



Ground Floor



Approx Gross Internal Area **1108 Sq Ft - 102.98 Sq M**

For Illustration Purposes Only - Not To Scale  
Floor plan by [www.creativeplanettk.com](http://www.creativeplanettk.com)