



## Elizabeth Mews, Belsize Park, London, NW3 .| £415

- Mews House
- Fitted Open Plan Kitchen
- Wooden Floors
- Ample Storage

- Fully Tiled Modernised Bathroom
- Private parking on the mews which is first come first served

"Vita Properties have been tremendously helpful throughout the process of securing/renting my flat. Informative about the property, prompt communication, easy to use dashboard for sharing of information, and pleasant to work with. Highly recommend!"

As sole agents we are delighted to offer this recently refurbished 1 bedroom mews house. Situated within moments of England's Lane and Belsize Park this fully modernised house benefits further from a large bedroom with a walk in wardrobe, fully tiled bathroom with shower attachment, fully fitted open plan kitchen, retracting doors and wooden floors. First come, first serve parking on the mews or an £80 per annum permit for surrounding area.






Available part furnished or unfurnished on the 1st February 2014



Oliver Kent

 [oliver.kent@vitaproperties.uk](mailto:oliver.kent@vitaproperties.uk)  
 +4477 7274 0351



 House  
 Under  
Negotiation  
 x 1  
 x 1  
 x 1



"I was very impressed with Vita and their network of buyers. When the sale of my flat fell through (twice) they worked extremely hard to find new buyers in a difficult market - thank you!"

---



"Working with Vita properties has been a smooth experience! No complaints at all. Our letting agent, Diana has been fantastic and very helpful throughout the whole process. I would highly recommend both Vita properties and Diana."

---





"I used Vita properties to find a flat recently and it was an overall professional, personalised and positive experience. Saira went the extra mile to accommodate to our needs and quick to help us whenever possible."

---

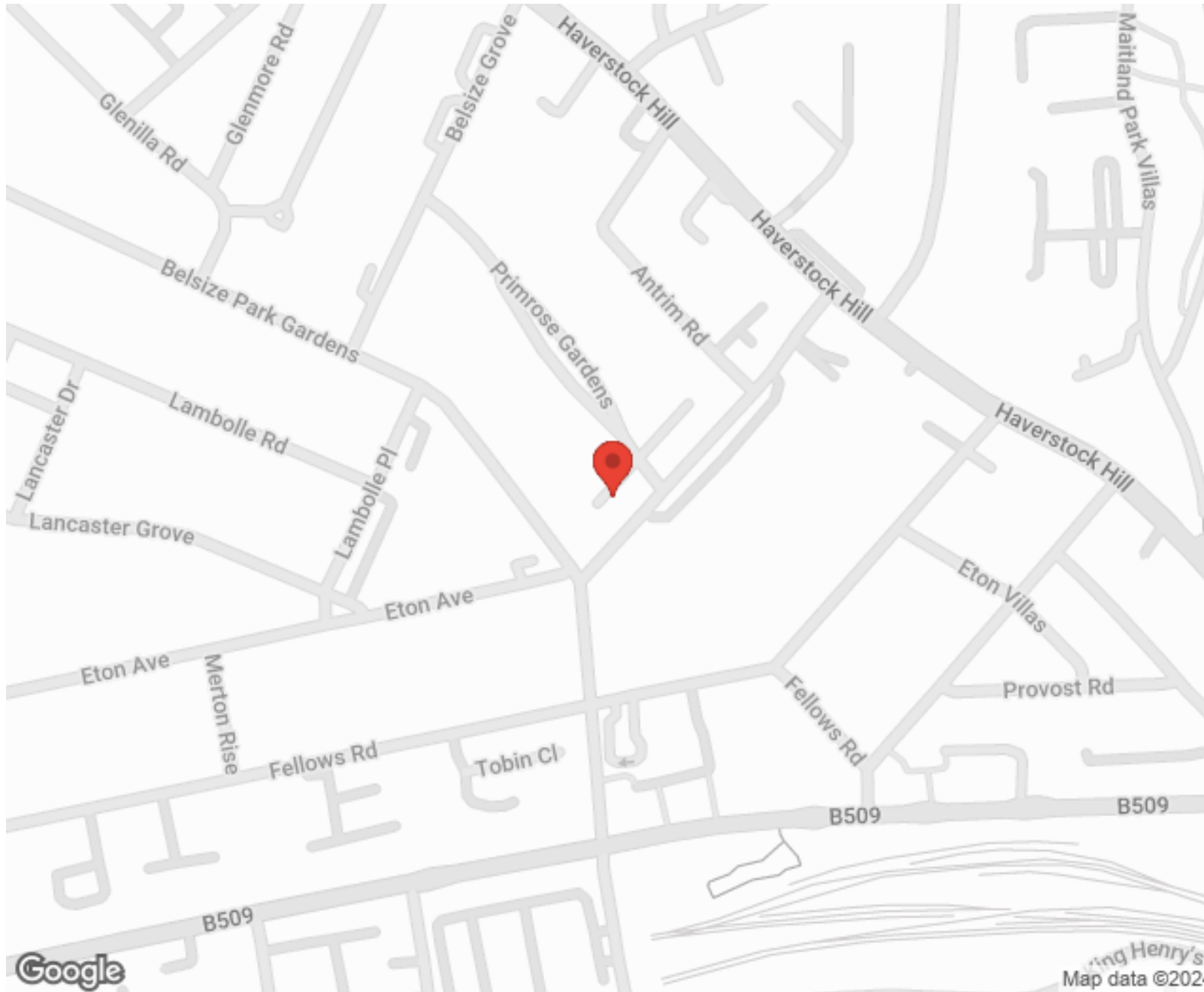


MORE INFO, PICTURES,  
CONTACT ON  
OUR WEBSITE



"Vita Properties is a very professional agency. My experience with them was incredible and the entire team was very helpful and kind throughout the renting process. I'd highly recommend!"

---



SCAN FOR MORE  
GOOGLE REVIEWS



Google



4.9 Stars | 132 Reviews

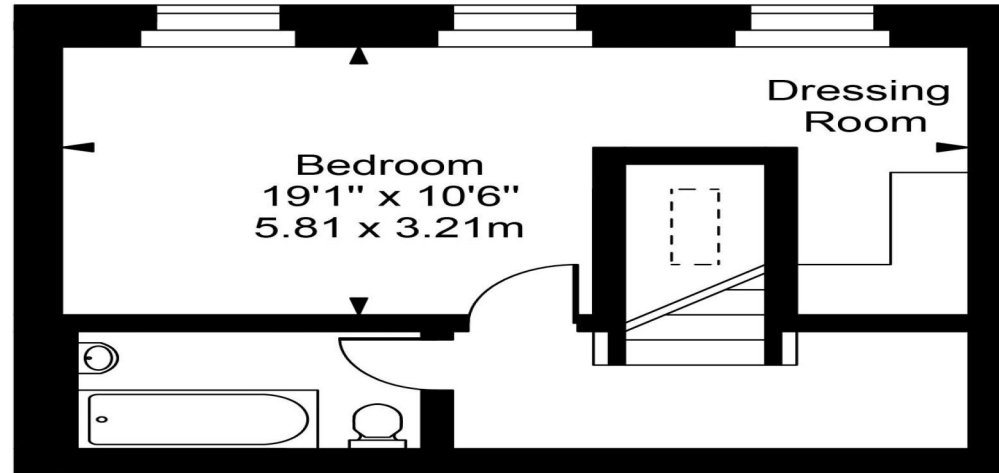
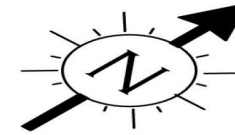
Find us on social media

 vitaproperties

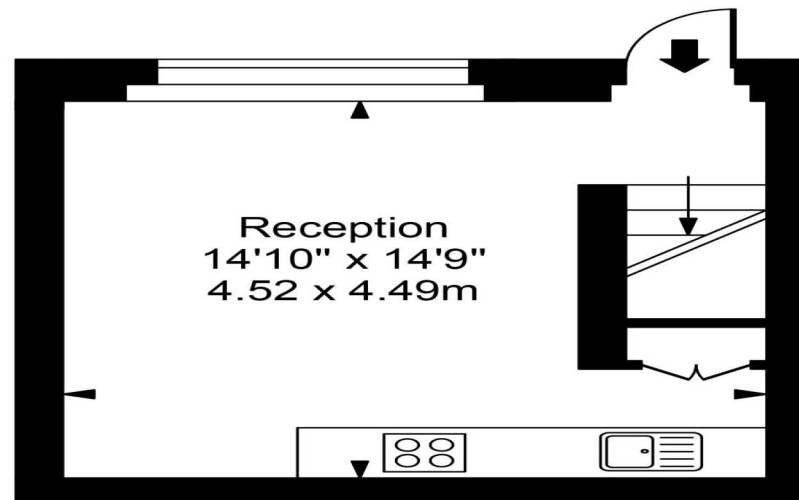
 VitaProperties

 VitaProperties

# Elizabeth Mews



First Floor



Ground Floor

Approx Gross Internal Area     **522 Sq Ft - 48.51 Sq M**

For Illustration Purposes Only - Not To Scale  
Floor plan by [www.creativeplanetlk.com](http://www.creativeplanetlk.com)