



Heath Drive, Hampstead, London, NW3 .| £575

- Spacious Reception
- Wooden Floors
- Managed
- Seconds to Hampstead Heath

- Located on one of Hampstead's Premier Roads
- Council tax - F - £1914 per annum

"Vita Properties have been tremendously helpful throughout the process of securing/renting my flat. Informative about the property, prompt communication, easy to use dashboard for sharing of information, and pleasant to work with. Highly recommend!"

Available immediately - Located on the second floor of this elegant period building and situated on one of Hampstead's Premier Roads, this smart apartment is both spacious and light. Comprising two double bedrooms, large reception room, well equipped and fitted kitchen and two bathrooms (one en-suite). Heath Drive is located within moments of both Hampstead, Finchley Road and West Hampstead.



Oliver Kent

✉ oliver.kent@vitaproperties.uk

☎ +4477 7274 0351



🏠 Flat
🔑 Available
to Let
🛏 x 2
🛋 x 1
🚿 x 2



"I was very impressed with Vita and their network of buyers. When the sale of my flat fell through (twice) they worked extremely hard to find new buyers in a difficult market - thank you!"



"Working with Vita properties has been a smooth experience! No complaints at all. Our letting agent, Diana has been fantastic and very helpful throughout the whole process. I would highly recommend both Vita properties and Diana."



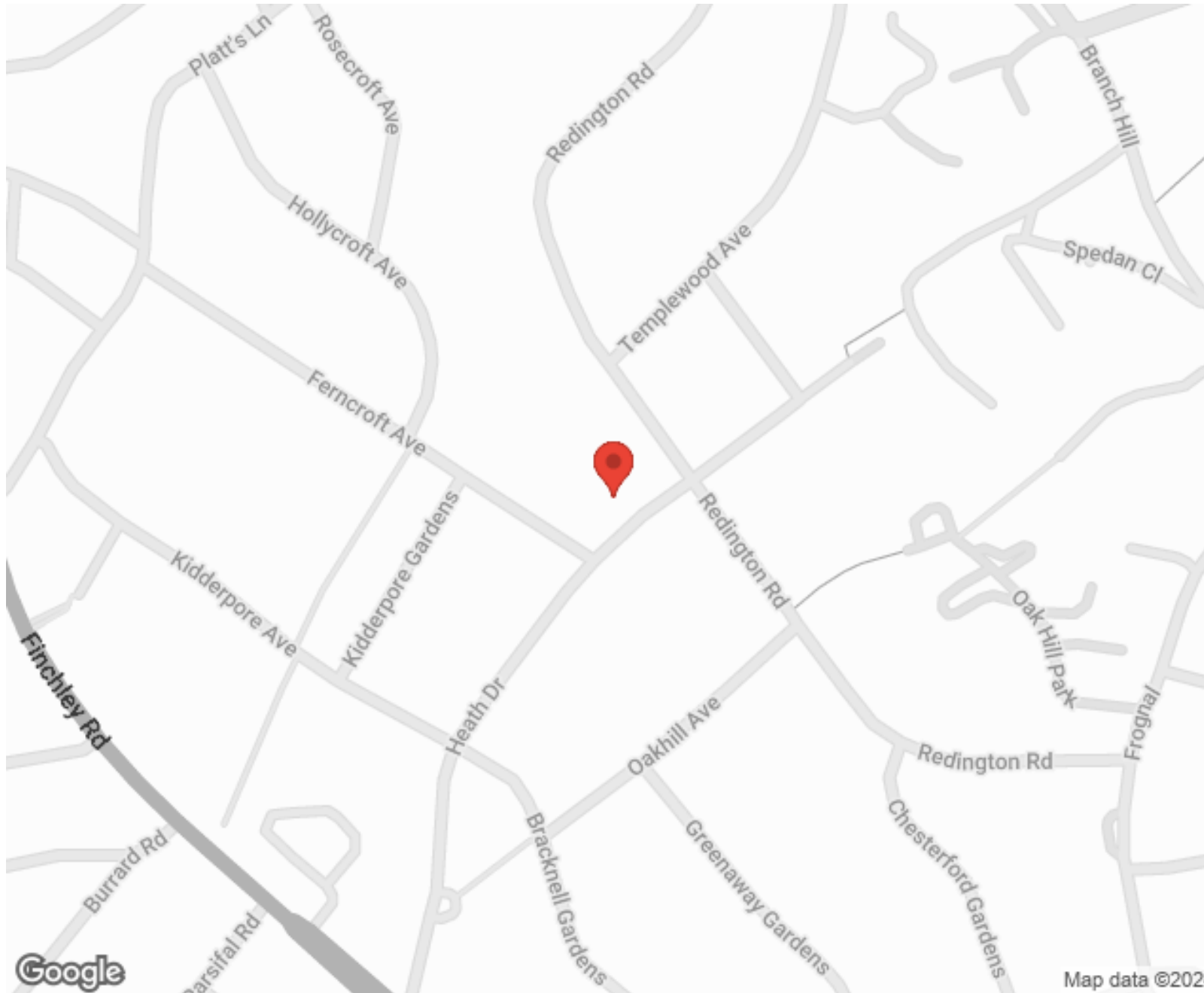
"I used Vita properties to find a flat recently and it was an overall professional, personalised and positive experience. Saira went the extra mile to accommodate to our needs and quick to help us whenever possible."



**MORE INFO, PICTURES,
CONTACT ON
OUR WEBSITE**



"Vita Properties is a very professional agency. My experience with them was incredible and the entire team was very helpful and kind throughout the renting process. I'd highly recommend!"



SCAN FOR MORE
GOOGLE REVIEWS



Google



4.9 Stars | 132 Reviews

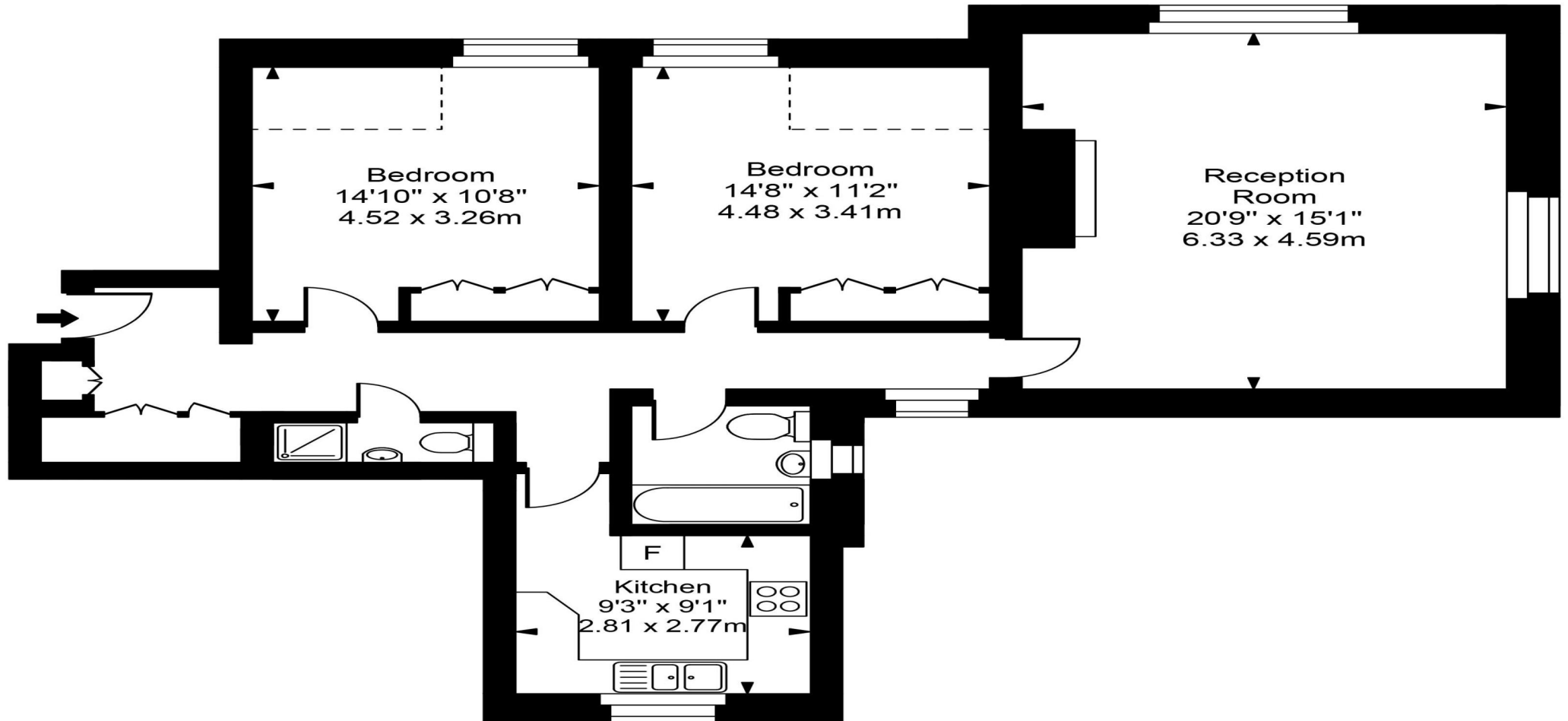
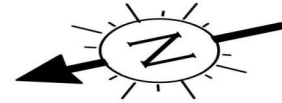
Find us on social media

 vitaproperties

 VitaProperties

 VitaProperties

Heath Drive



Second Floor



Approx Gross Internal Area **939 Sq Ft - 87.22 Sq M**

For Illustration Purposes Only - Not To Scale
Floor plan by www.creativeplanetlk.com