



Honeybourne Road, West Hampstead, London, NW6 .| £595

- 3/4 Bedrooms
- 2 Bathrooms
- Small Balcony
- Moments from tube

- Sought after location
- Eat in kitchen
- Council tax - E - £1619 per annum

"Vita Properties have been tremendously helpful throughout the process of securing/renting my flat. Informative about the property, prompt communication, easy to use dashboard for sharing of information, and pleasant to work with. Highly recommend!"

Harvard Court is arguably the best mansion block in West Hampstead. This is a newly decorated, exceptionally spacious 1st floor, 3/4 bedroom apartment. Honeybourne Road is a prime central location and highly sought after, The flat offers a generous sized living room, 3 double bedrooms and a 4th single/study, a large kitchen/ diner and 2 bathrooms (1 en-suite) & an on site porter. Available immediately on furnished or unfurnished.



Oliver Kent

✉ [oliver.kent@vitaproperties.uk](mailto:oliver.kent@vitaproperties.uk)

☎ +4477 7274 0351



🏠	Flat
🔑	Available to Let
🛏️	x 4
🪑	x 1
🚿	x 2



"I was very impressed with Vita and their network of buyers. When the sale of my flat fell through (twice) they worked extremely hard to find new buyers in a difficult market - thank you!"

---



"Working with Vita properties has been a smooth experience! No complaints at all. Our letting agent, Diana has been fantastic and very helpful throughout the whole process. I would highly recommend both Vita properties and Diana."

---



"I used Vita properties to find a flat recently and it was an overall professional, personalised and positive experience. Saira went the extra mile to accommodate to our needs and quick to help us whenever possible."

---

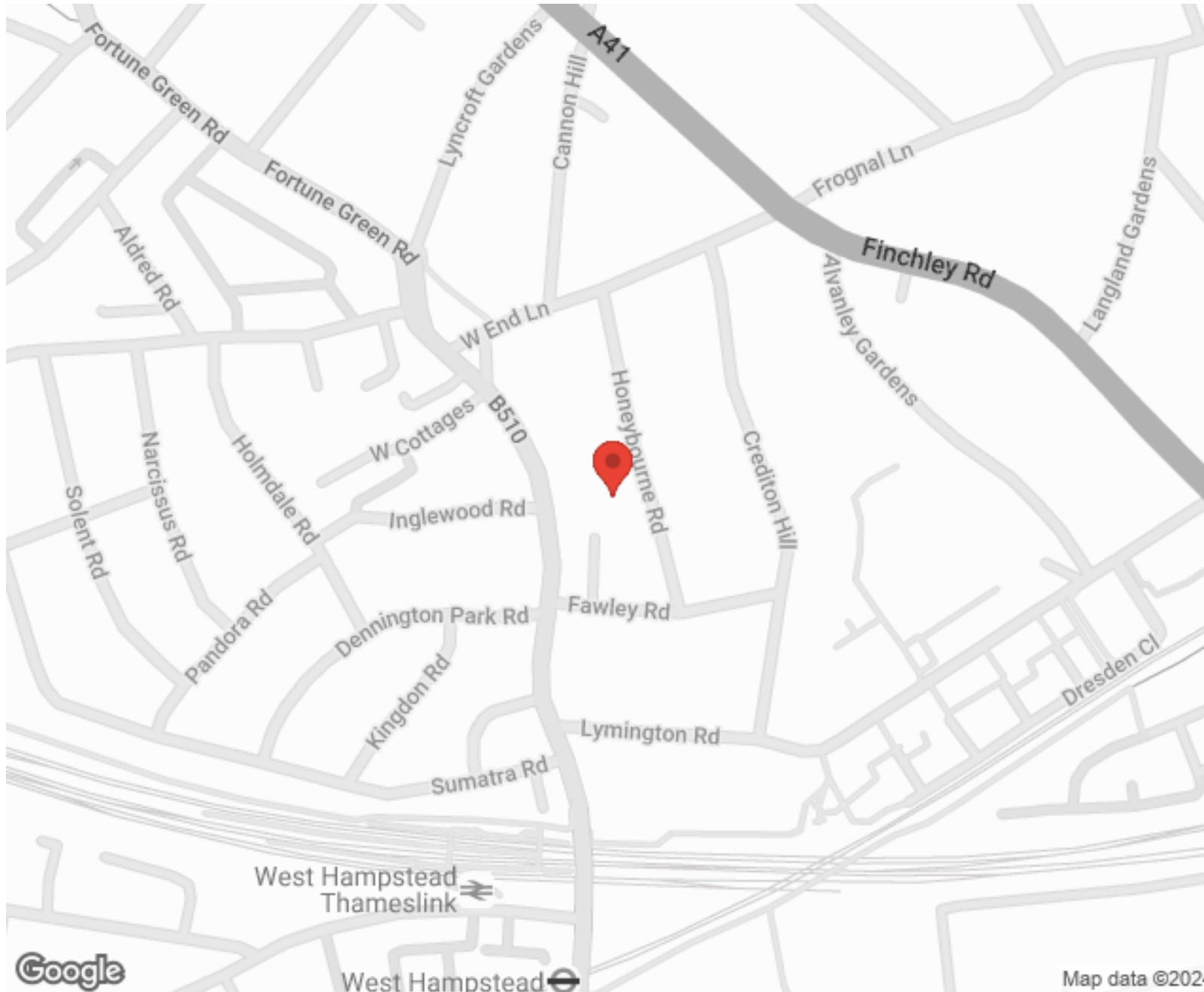


**MORE INFO, PICTURES,  
CONTACT ON  
OUR WEBSITE**



"Vita Properties is a very professional agency. My experience with them was incredible and the entire team was very helpful and kind throughout the renting process. I'd highly recommend!"

---



SCAN FOR MORE  
GOOGLE REVIEWS






Google

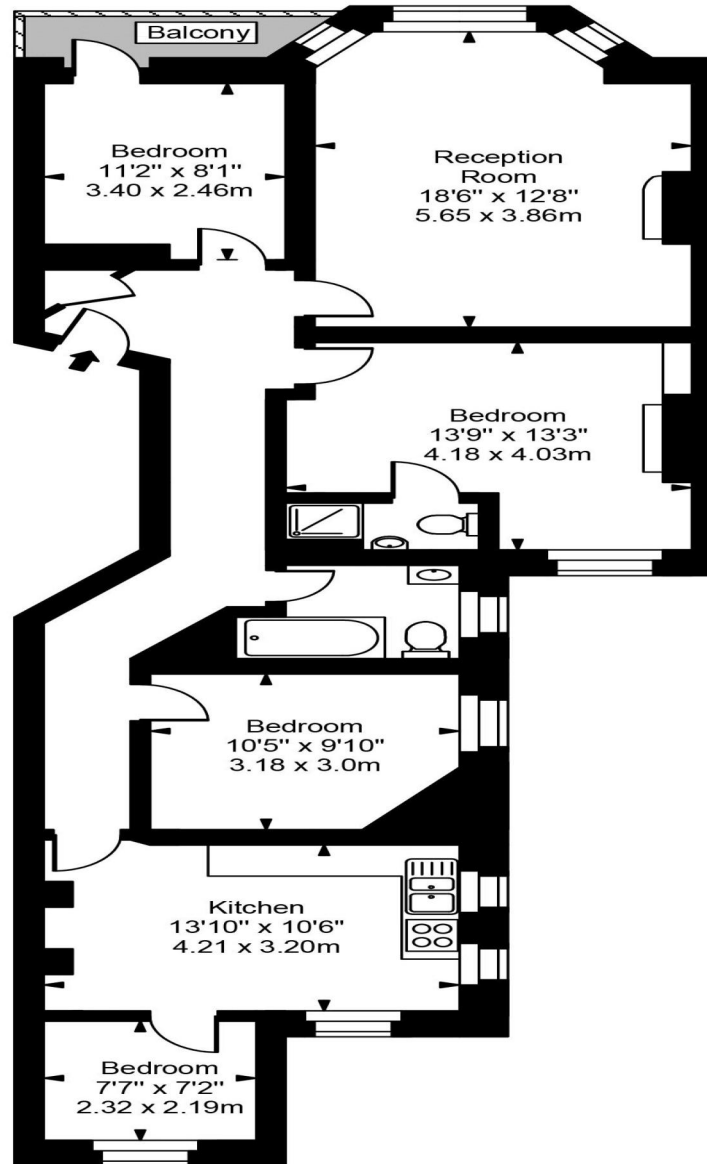
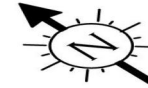


4.9 Stars | 132 Reviews

Find us on social media

-  vitaproperties
-  VitaProperties
-  VitaProperties

# Harvard Court



First Floor



Approx Gross Internal Area **1074 Sq Ft - 99.82 Sq M**

For Illustration Purposes Only - Not To Scale  
Floor plan by [www.creativeplanettk.com](http://www.creativeplanettk.com)