



Adams Row, Mayfair, London, W1K .| £1,200

- Managed
- Modern
- located in the heart of Mayfair
- Fully Furnished

- Duplex flat
- Mycounciltax.org.uk - G £1141 per annum
- Available 24 August 2015

"Vita Properties have been tremendously helpful throughout the process of securing/renting my flat. Informative about the property, prompt communication, easy to use dashboard for sharing of information, and pleasant to work with. Highly recommend!"

Available 24 August 2015 - A completely refurbished 2 bedroom second floor flat in the heart of Mayfair near Grosvenor Square. The property has two bedrooms both with en-suite bathroom, (one with bath/WC and the other with WC and shower) a further small study/loft space. It also benefits from one spacious reception/open plan fully equipped kitchen with brand new appliances, and independent central heating. Satellite/Sky TV Nearest Tube: Bond Street.



Oliver Kent

✉ oliver.kent@vitaproperties.uk
☎ +4477 7274 0351



🏠	Flat
🔑	Available to Let
🛏	x 2
🚿	x 1
📺	x 2



"I was very impressed with Vita and their network of buyers. When the sale of my flat fell through (twice) they worked extremely hard to find new buyers in a difficult market - thank you!"



"Working with Vita properties has been a smooth experience! No complaints at all. Our letting agent, Diana has been fantastic and very helpful throughout the whole process. I would highly recommend both Vita properties and Diana."



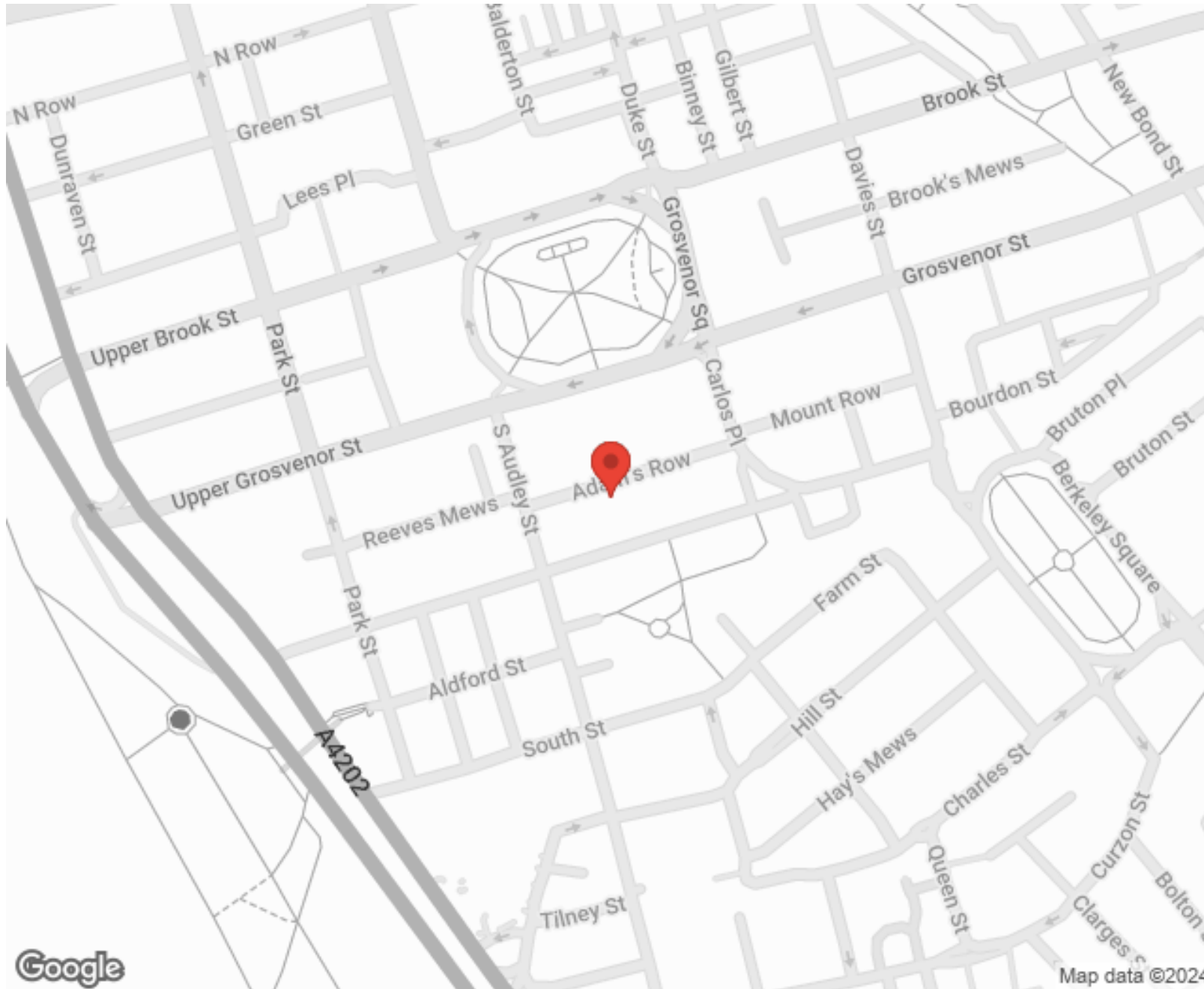
"I used Vita properties to find a flat recently and it was an overall professional, personalised and positive experience. Saira went the extra mile to accommodate to our needs and quick to help us whenever possible."



**MORE INFO, PICTURES,
CONTACT ON
OUR WEBSITE**



"Vita Properties is a very professional agency. My experience with them was incredible and the entire team was very helpful and kind throughout the renting process. I'd highly recommend!"



SCAN FOR MORE
GOOGLE REVIEWS






Google

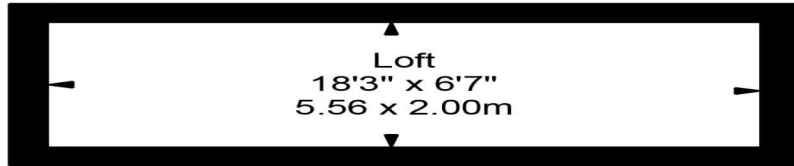


4.9 Stars | 132 Reviews

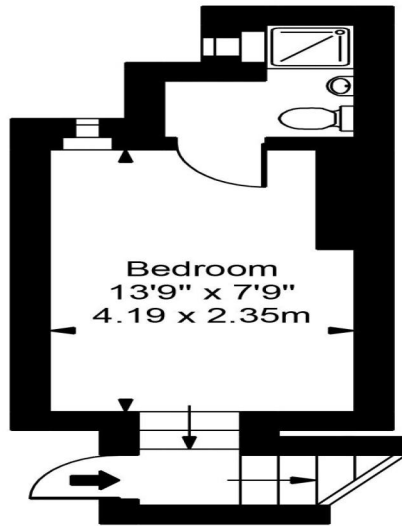
Find us on social media

-  vitaproperties
-  VitaProperties
-  VitaProperties

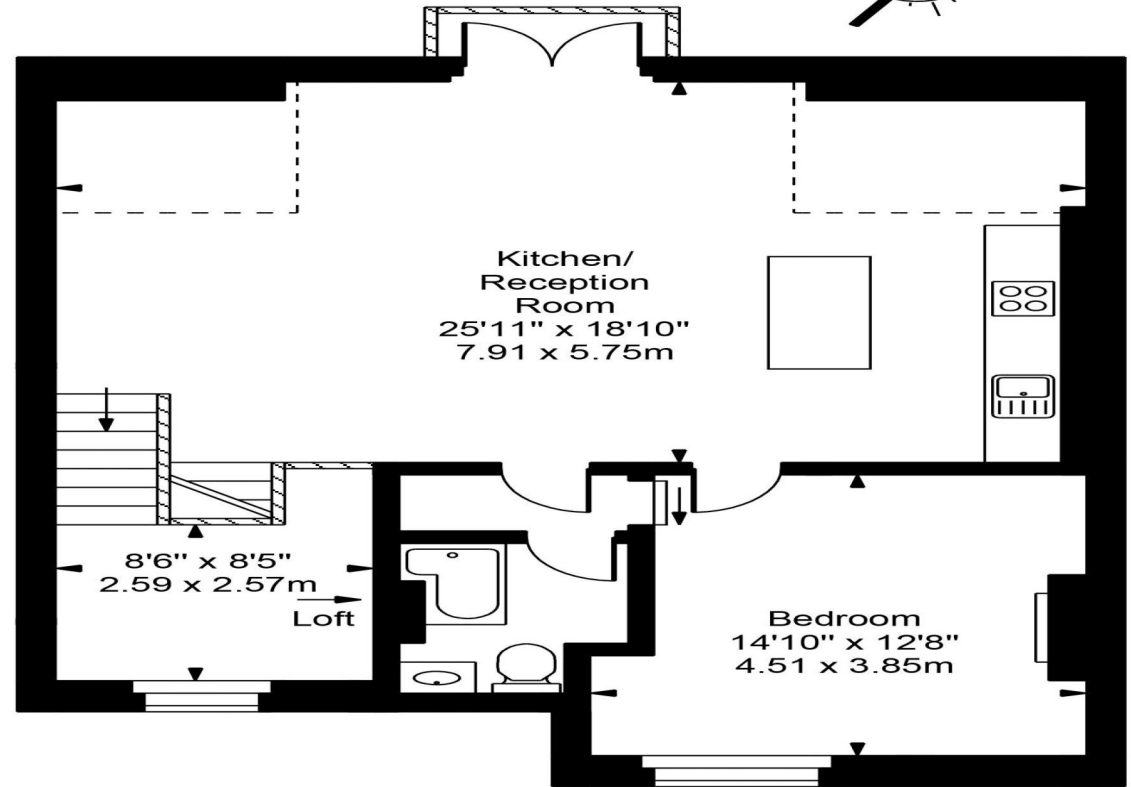
Adams Row



Loft



First Floor
Entrance



Second Floor



Approx Gross Internal Area **1155 Sq Ft - 107.30 Sq M**

For Illustration Purposes Only - Not To Scale
Floor plan by www.creativeplanettk.com