



Dartmouth Road, London, NW2 .| £365

- Gas Fireplace
- Brand newly refurbished
- Eat In kitchen
- Plenty of storage

- Coucil tax - D £1362 per annum

"Vita Properties have been tremendously helpful throughout the process of securing/renting my flat. Informative about the property, prompt communication, easy to use dashboard for sharing of information, and pleasant to work with. Highly recommend!"

A well presented and spacious 815 sq ft two double bedroom top floor flat set in a three storey red brick character building in a desirable road on The Mapesbury Conservation Area. The property is located within easy reach from Kilburn and Willesden Green stations (Jubilee Line) and the variety of shops, bars, restaurants. The accommodation comprises a 16' South West facing reception room with a gas fireplace, loft access and high ceilings; a brand new separate kitchen incorporating a range of wall and base units with integrated gas hob and a 12' master bedroom with fitted wardrobes. Further benefits include a double aspect second double bedroom with wood floors and fitted storage, a brand new bathroom incorporating a three piece suite and a separate shower cubicle, communal gardens, gas central heating and residents permit parking.

	Flat
	Under Negotiation
	x 2
	x 1
	x 1



Oliver Kent

 [oliver.kent@vitaproperties.uk](mailto:oliver.kent@vitaproperties.uk)

 +4477 7274 0351



"I was very impressed with Vita and their network of buyers. When the sale of my flat fell through (twice) they worked extremely hard to find new buyers in a difficult market - thank you!"

---



"Working with Vita properties has been a smooth experience! No complaints at all. Our letting agent, Diana has been fantastic and very helpful throughout the whole process. I would highly recommend both Vita properties and Diana."

---





"I used Vita properties to find a flat recently and it was an overall professional, personalised and positive experience. Saira went the extra mile to accommodate to our needs and quick to help us whenever possible."

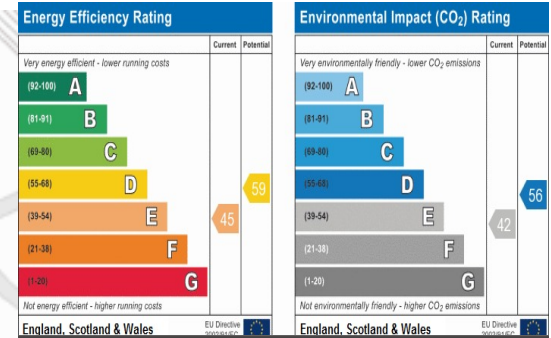
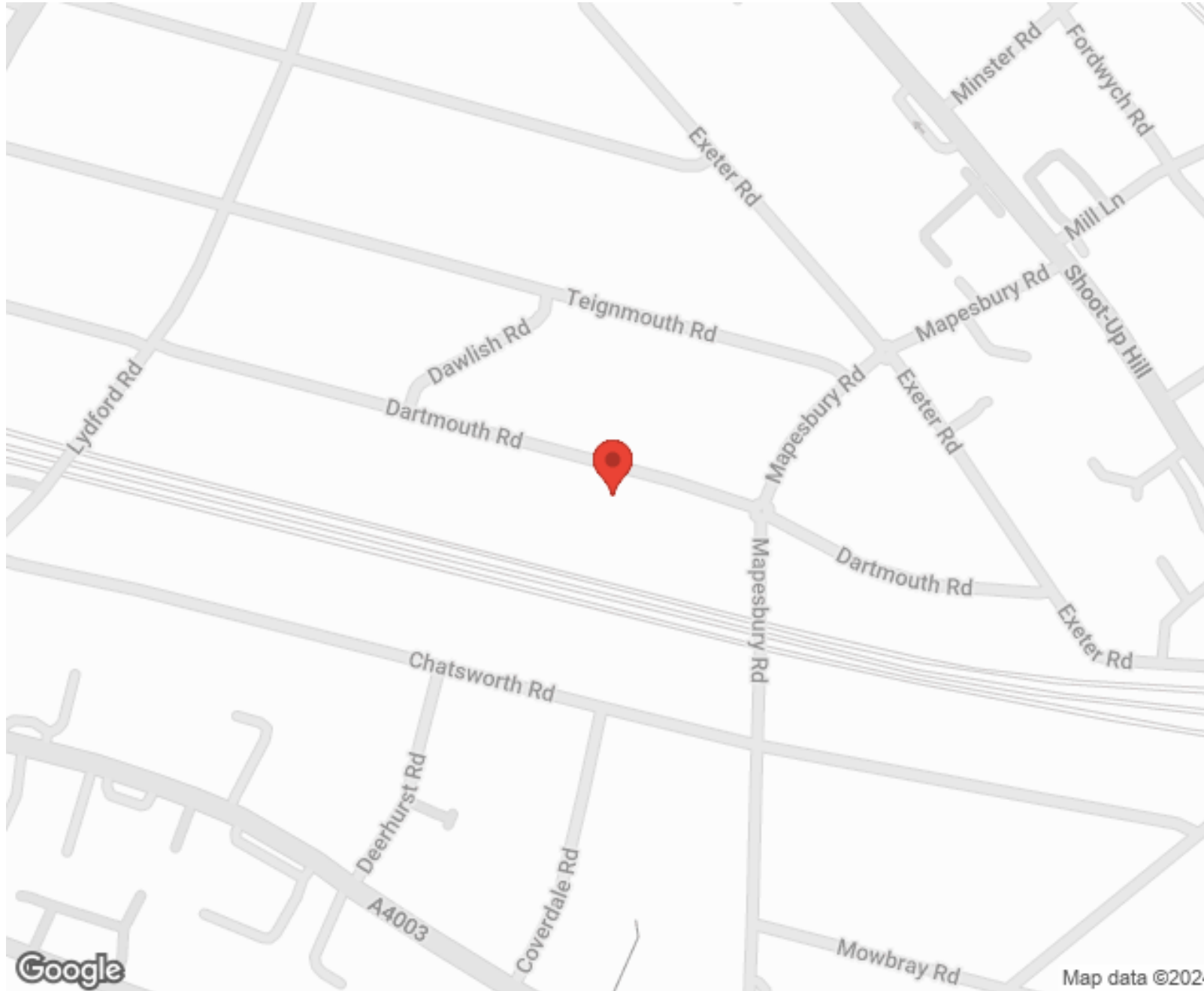
---



**MORE INFO, PICTURES,  
CONTACT ON  
OUR WEBSITE**



"Vita Properties is a very professional agency. My experience with them was incredible and the entire team was very helpful and kind throughout the renting process. I'd highly recommend!"



SCAN FOR MORE  
GOOGLE REVIEWS






Google

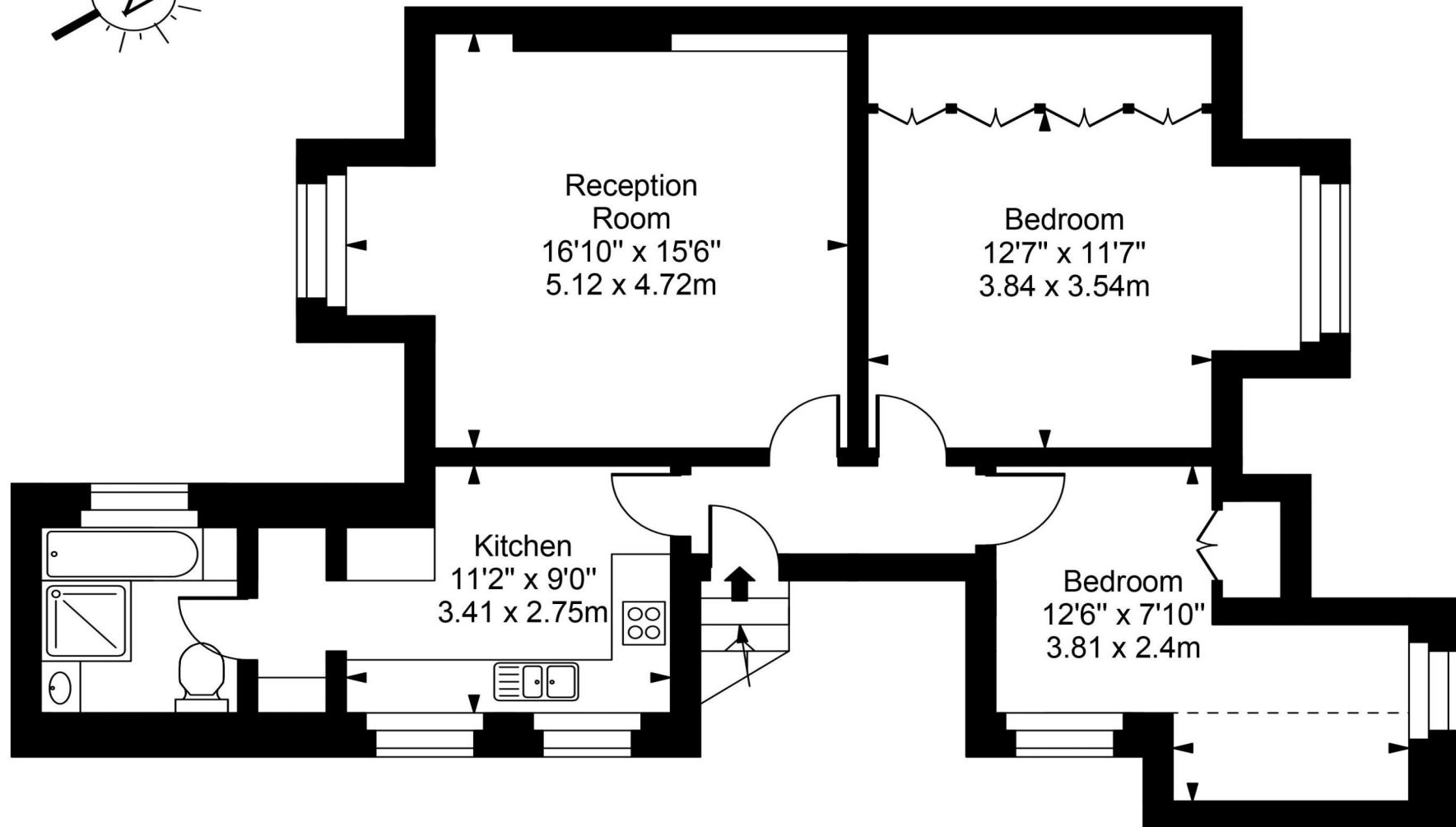
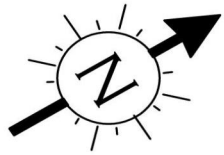


4.9 Stars | 132 Reviews

Find us on social media

-  vitaproperties
-  VitaProperties
-  VitaProperties

# Dartmouth Road



Top Floor



Approx Gross Internal Area **815 Sq Ft - 75.69 Sq M**

For Illustration Purposes Only - Not To Scale  
Floor plan by [www.creativeplanetlk.com](http://www.creativeplanetlk.com)