



Bracknell Gardens, Hampstead, London, NW3 .| £2,590

- Garden
- Terrace
- Utility Room
- Fully Fitted Eat In Kitchen

- Two Plasma / LCD screens with 5.1 surround sound
- Available 28 February 2023

"Vita Properties have been tremendously helpful throughout the process of securing/renting my flat. Informative about the property, prompt communication, easy to use dashboard for sharing of information, and pleasant to work with. Highly recommend!"

Presenting this luxurious four bedroom, garden apartment situated on the popular Bracknell Gardens. The property is finished to the highest standard with wood flooring, plasma & LCD TV's with surround sound & access to a large terrace. The property is in a prime location within very close distances to local amenities including Hampstead Village (Northern Line) and Finchley Road (Jubilee & Metropolitan Lines). Principal Bedroom with En-Suite Bathroom, 3 Further Bedrooms, 2 Further Bathrooms (1 En-Suite), Large Reception Room, Eat In Kitchen, Utility Room.

Large Terrace, Permit Parking, Alarm, 80ft Landscaped Rear Garden



Oliver Kent

✉ oliver.kent@vitaproperties.uk
☎ +4477 7274 0351



🏠	Flat
🔑	Available to Let
🛏️	x 4
🛋️	x 1
🚿	x 3

"I was very impressed with Vita and their network of buyers. When the sale of my flat fell through (twice) they worked extremely hard to find new buyers in a difficult market - thank you!"



"Working with Vita properties has been a smooth experience! No complaints at all. Our letting agent, Diana has been fantastic and very helpful throughout the whole process. I would highly recommend both Vita properties and Diana."



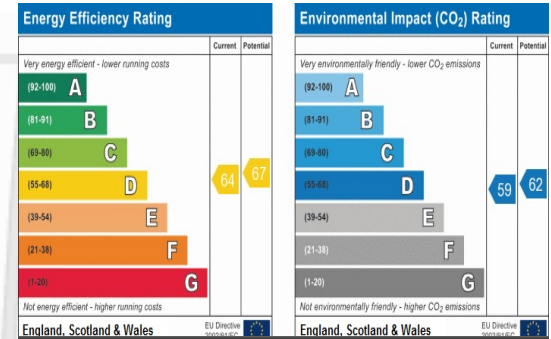
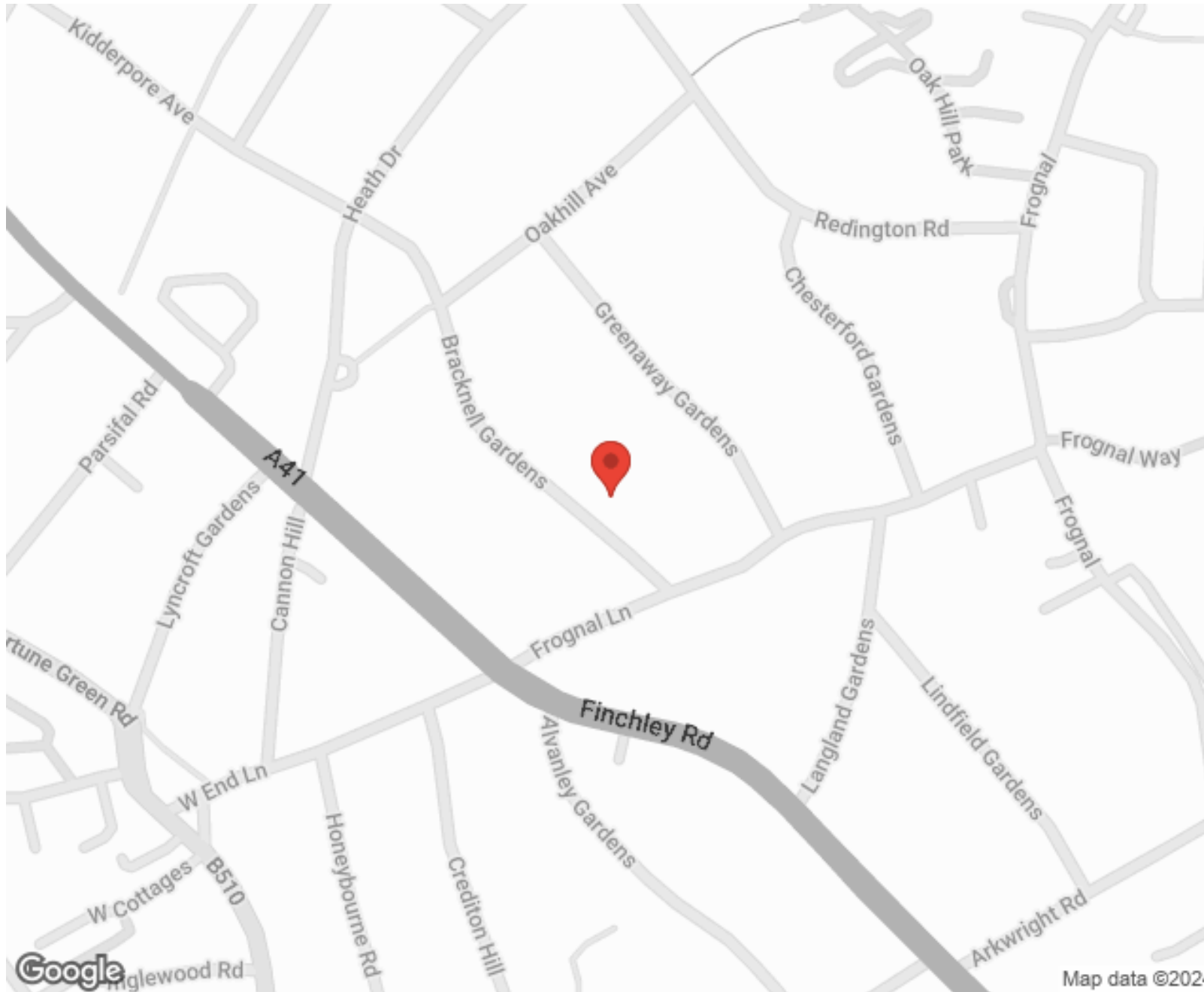
"I used Vita properties to find a flat recently and it was an overall professional, personalised and positive experience. Saira went the extra mile to accommodate to our needs and quick to help us whenever possible."



**MORE INFO, PICTURES,
CONTACT ON
OUR WEBSITE**



"Vita Properties is a very professional agency. My experience with them was incredible and the entire team was very helpful and kind throughout the renting process. I'd highly recommend!"



SCAN FOR MORE
GOOGLE REVIEWS



Google

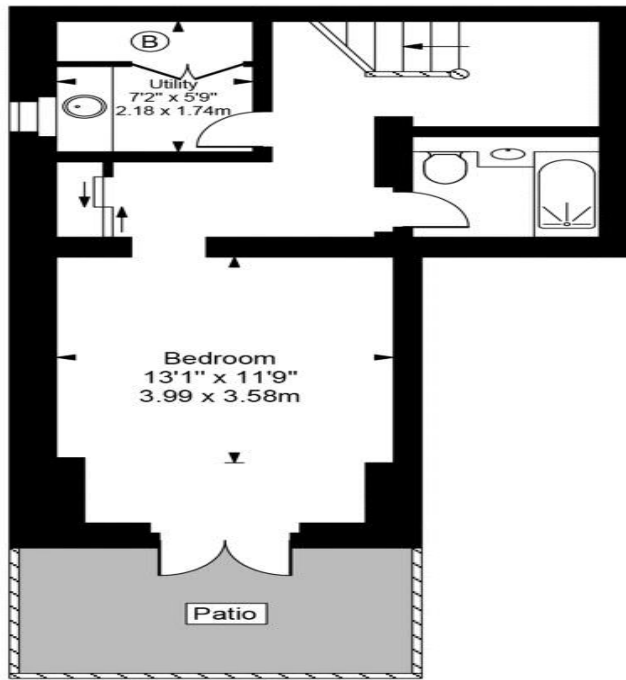
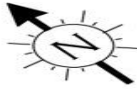


4.9 Stars | 132 Reviews

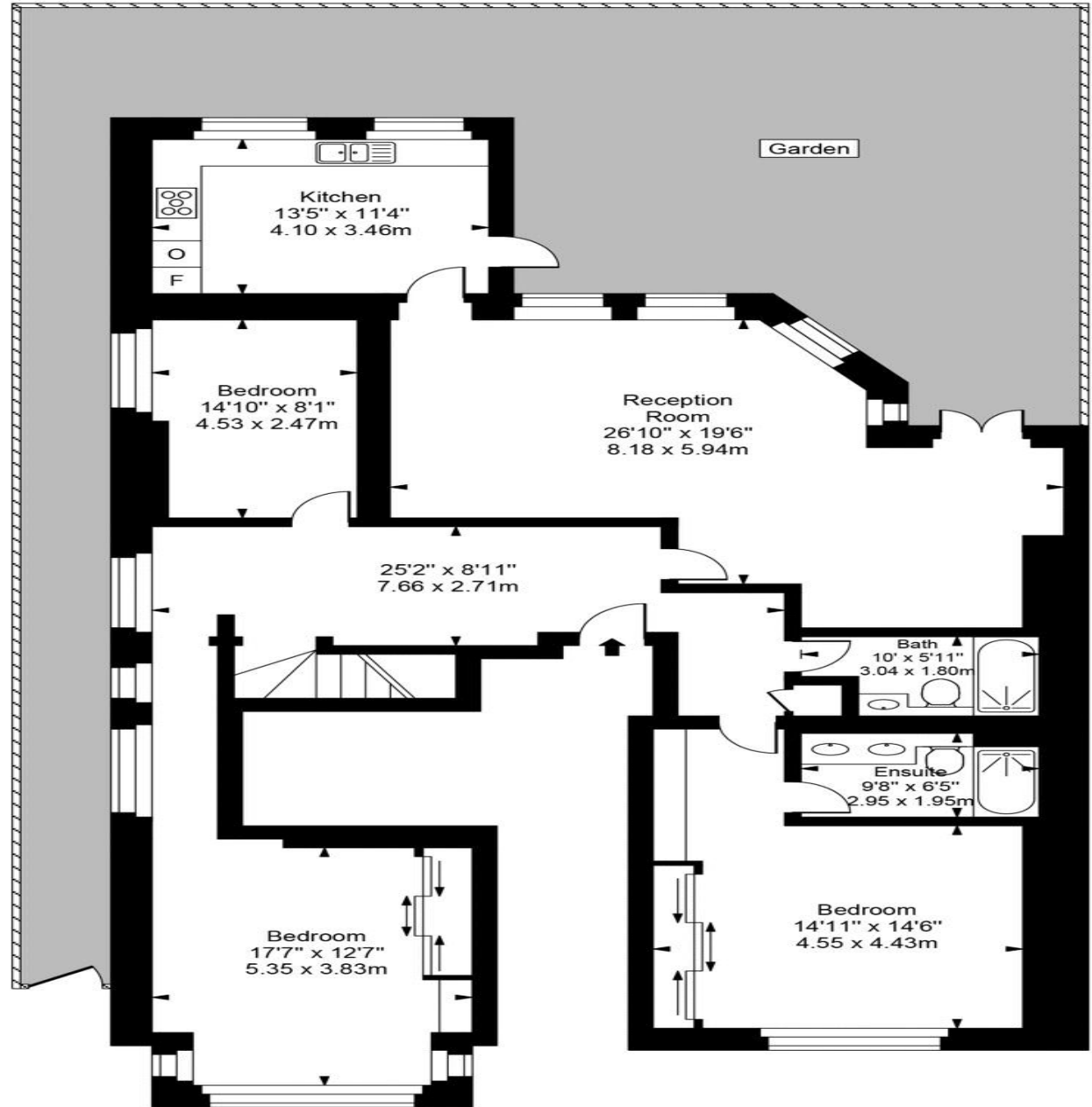
Find us on social media

- vitaproperties
- VitaProperties
- VitaProperties

Bracknell Gardens



Lower Ground Floor



Ground Floor



Approx Gross Internal Area 2159 Sq Ft - 200.56 Sq M

For Illustration Purposes Only - Not To Scale
Floor plan by www.creativeplanettk.com