



Greencroft Gardens, South Hampstead, London, NW6 .| £475

- Modern
- Wooden Floors
- Seconds to Finchley Road Tube
- Top Floor

- Furnished or unfurnished, landlord is flexible
- Available 17th February
- Council tax - E - £1619 per annum

"Vita Properties have been tremendously helpful throughout the process of securing/renting my flat. Informative about the property, prompt communication, easy to use dashboard for sharing of information, and pleasant to work with. Highly recommend!"

A spacious TWO DOUBLE BEDROOM, TWO BATHROOM TOP FLOOR apartment set within a red-brick conversion. The apartment is extremely well decorated throughout with solid wood flooring, stunning fully fitted kitchen and access to beautiful communal gardens.

Located in a prime location close to local amenities including Finchley Road Underground Station (Northern Line), O2 Centre and Swiss Cottage.



Oliver Kent

✉ oliver.kent@vitaproperties.uk
☎ +4477 7274 0351



| | |
|---|------------------|
| 🏠 | Flat |
| 🔑 | Available to Let |
| 🛏 | x 2 |
| 🛋 | x 1 |
| 🚿 | x 2 |



"I was very impressed with Vita and their network of buyers. When the sale of my flat fell through (twice) they worked extremely hard to find new buyers in a difficult market - thank you!"



"Working with Vita properties has been a smooth experience! No complaints at all. Our letting agent, Diana has been fantastic and very helpful throughout the whole process. I would highly recommend both Vita properties and Diana."



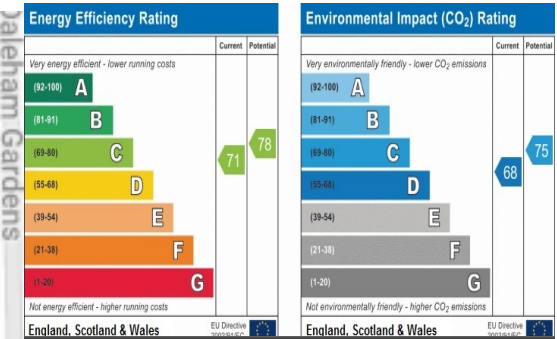
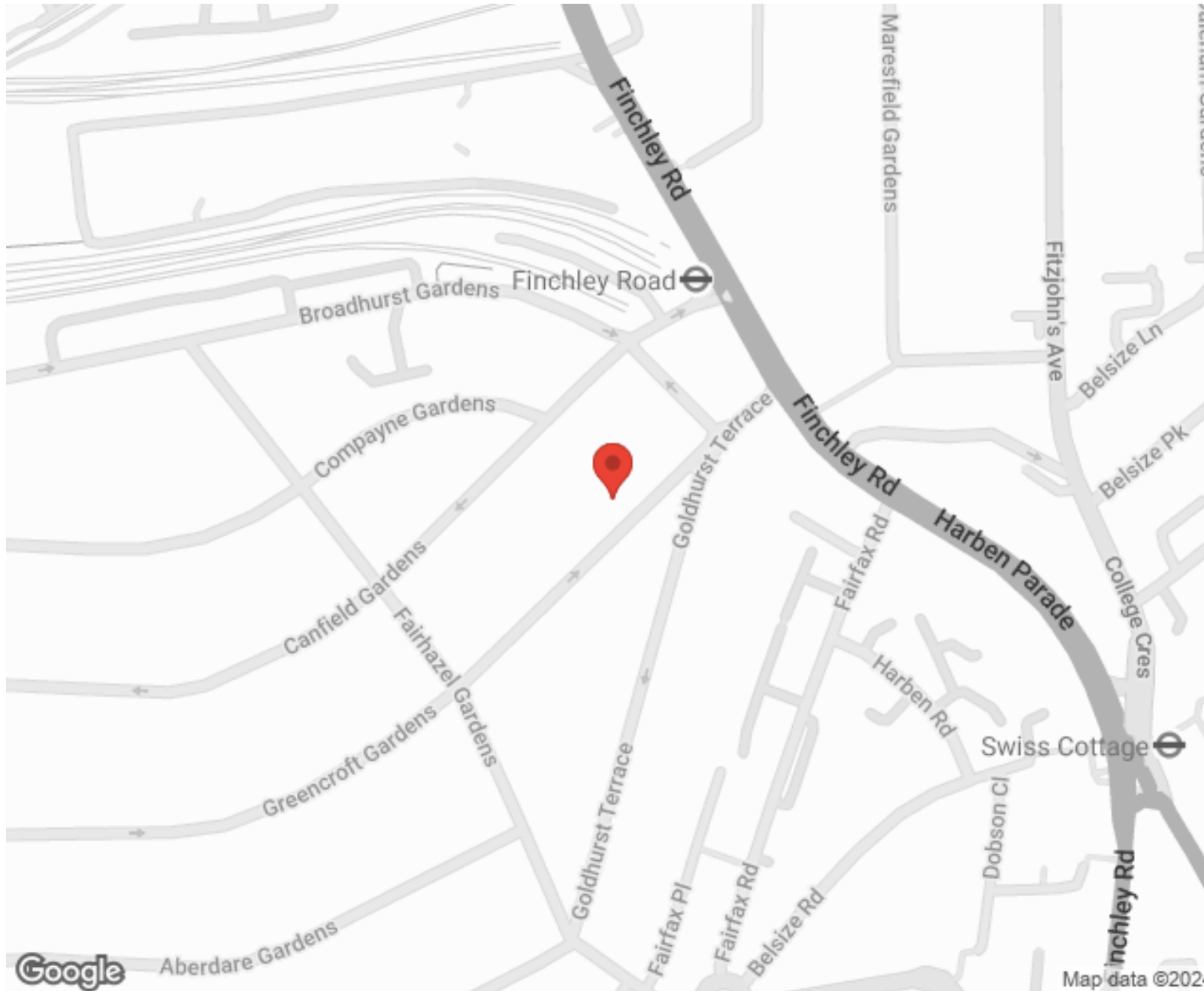
"I used Vita properties to find a flat recently and it was an overall professional, personalised and positive experience. Saira went the extra mile to accommodate to our needs and quick to help us whenever possible."



**MORE INFO, PICTURES,
CONTACT ON
OUR WEBSITE**



"Vita Properties is a very professional agency. My experience with them was incredible and the entire team was very helpful and kind throughout the renting process. I'd highly recommend!"



SCAN FOR MORE
GOOGLE REVIEWS



Google

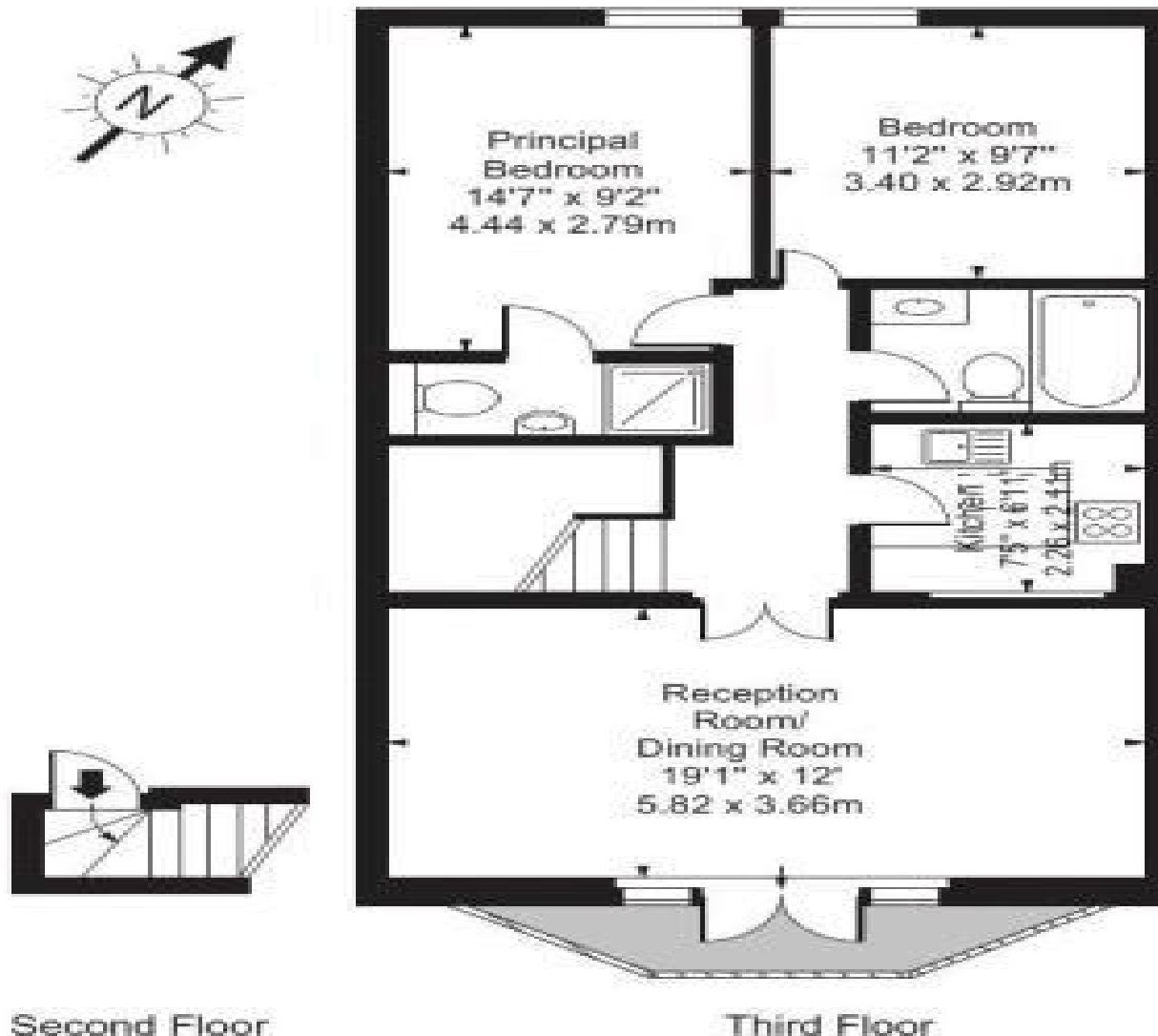


4.9 Stars | 132 Reviews

Find us on social media

- vitaproperties
- VitaProperties
- VitaProperties

Greencroft Gardens, South Hampstead, NW6



Approx Gross Internal Area 755 Sq Ft - 70.14 Sq M

For Illustration Purposes Only - Not To Scale Floor Plan by www.nogaphotostudio.com Ref: No.20755

This floor plan should be used as a general outline for guidance only. Any intending purchaser or lessee should satisfy themselves by inspection, searches, enquiries and full survey as to the correctness of each statement. Any areas, measurements or distances quoted are approximate and should not be used to value a property or be the basis of any sale or let.