



Greville Place, St Johns Wood, NW8 .| £395,000


- Recently Refurbished To A Very High Standard
- No Upper Chain
- Granite Worktops
- Bosch Appliances

- Air Conditioning


"Vita Properties have been tremendously helpful throughout the process of securing/renting my flat. Informative about the property, prompt communication, easy to use dashboard for sharing of information, and pleasant to work with. Highly recommend!"


We are delighted to welcome to the market this spacious (510 sq ft) recently refurbished one double bedroom ground floor flat set in an attractive purpose built block on the borders of St John's Wood. The property is located on the borders of St Johns Wood, South Hampstead and Kilburn and has easy access to Maida Vale and Kilburn Park tube station (Bakerloo) and South Hampstead overground (North London Line) together with the amenities of Kilburn High Road. The accommodation comprises entrance hallway with hardwood flooring, entryphone system and alarm pad; luxury shower room incorporating a white suite with a double shower cubicle with raindance shower, heated towel rail, extractor fan, fully tiled floor to ceiling, wash hand basin with slow closure drawers and a wall mounted mirror with inset lighting.

Further benefits include fitted wardrobes to the double bedroom with a large storage cupboard housing the combination boiler, a 21' double aspect reception room with hardwood flooring, remote LED ambient light ceiling panel, remote air conditioning and an ultra modern open plan kitchen with Granite work surfaces, incinerator, integral Bosch appliances including dishwasher/washing machine/fridge freezer/double oven and under unit lighting.




Flat






x 1



x 1



x 1

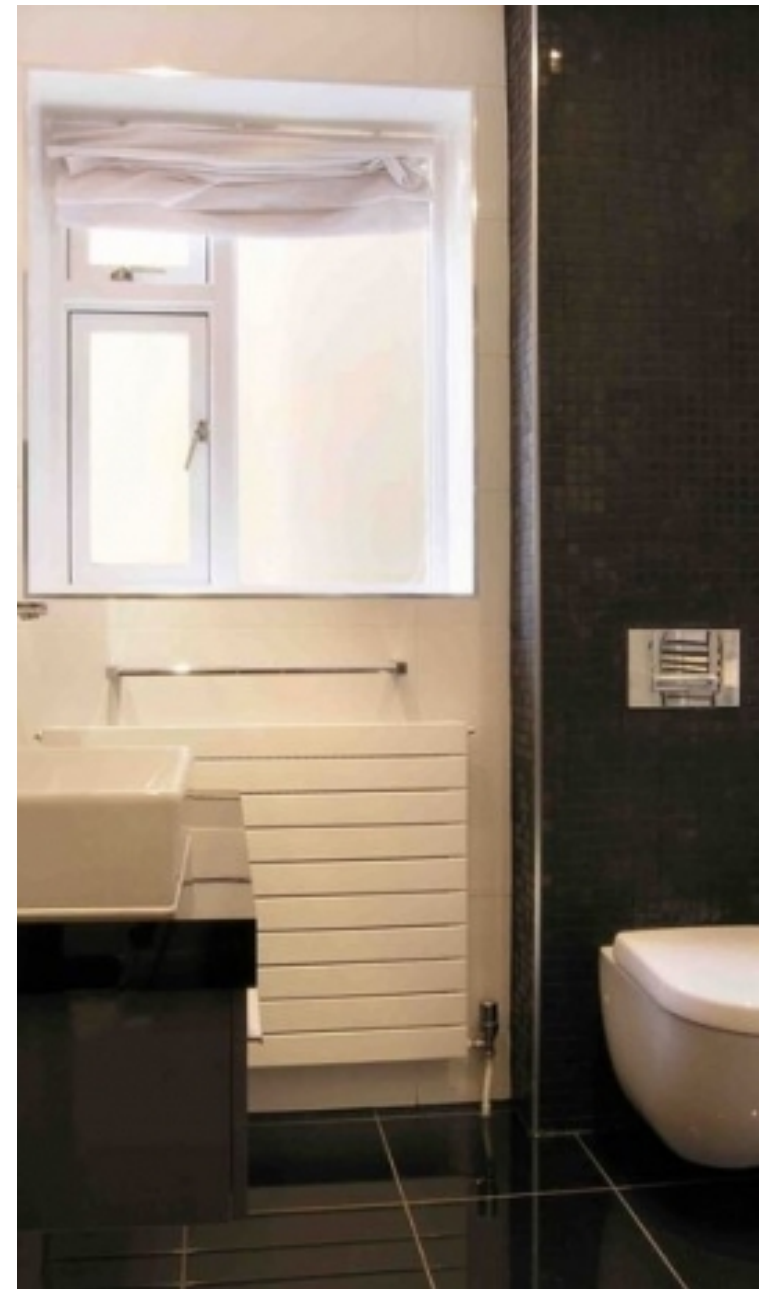


Oliver Kent

 oliver.kent@vitaproperties.uk
 +4477 7274 0351



"I was very impressed with Vita and their network of buyers. When the sale of my flat fell through (twice) they worked extremely hard to find new buyers in a difficult market - thank you!"



"Working with Vita properties has been a smooth experience! No complaints at all. Our letting agent, Diana has been fantastic and very helpful throughout the whole process. I would highly recommend both Vita properties and Diana."



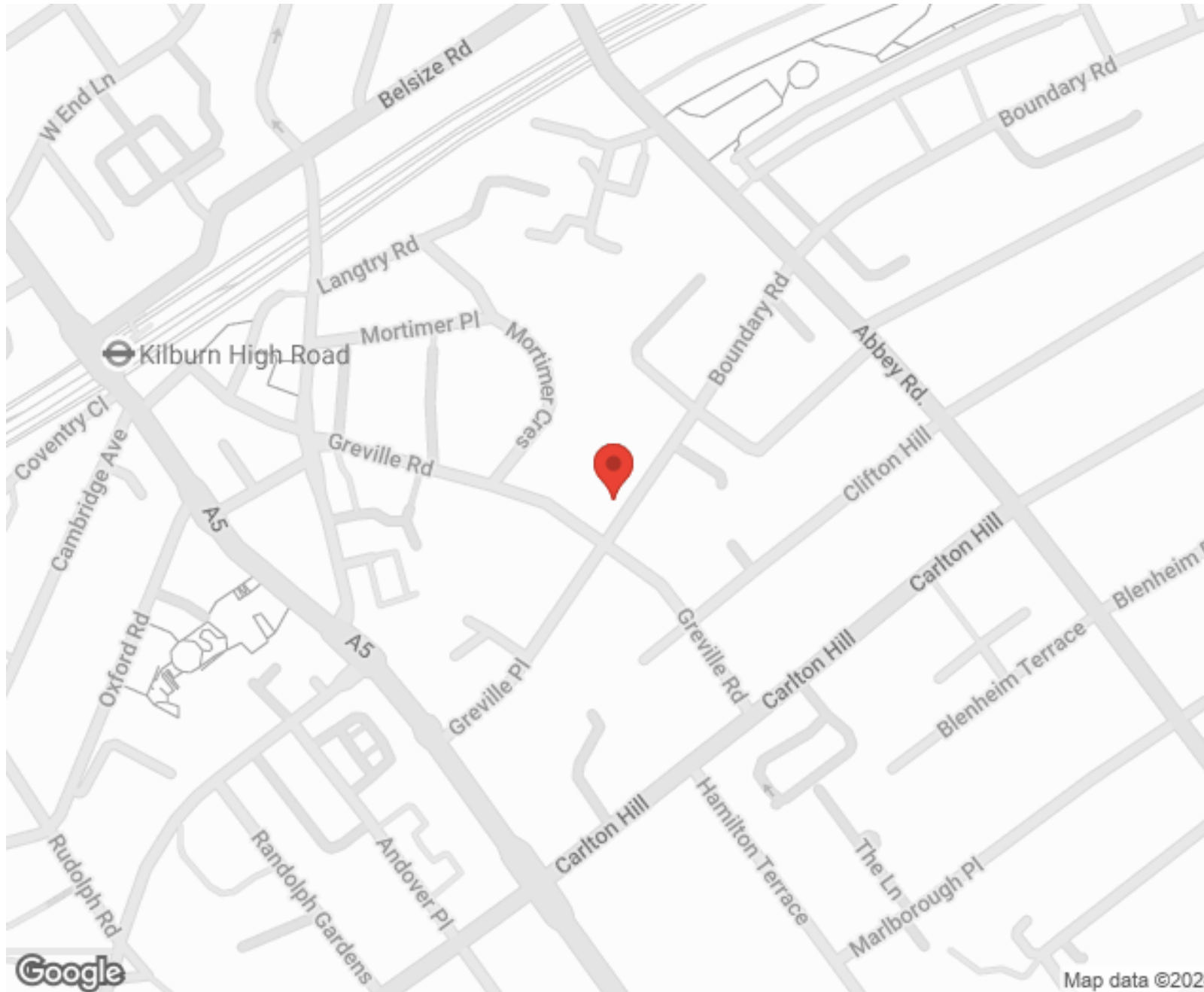
"I used Vita properties to find a flat recently and it was an overall professional, personalised and positive experience. Saira went the extra mile to accommodate to our needs and quick to help us whenever possible."



MORE INFO, PICTURES,
CONTACT ON
OUR WEBSITE



"Vita Properties is a very professional agency. My experience with them was incredible and the entire team was very helpful and kind throughout the renting process. I'd highly recommend!"



SCAN FOR MORE
GOOGLE REVIEWS




Google




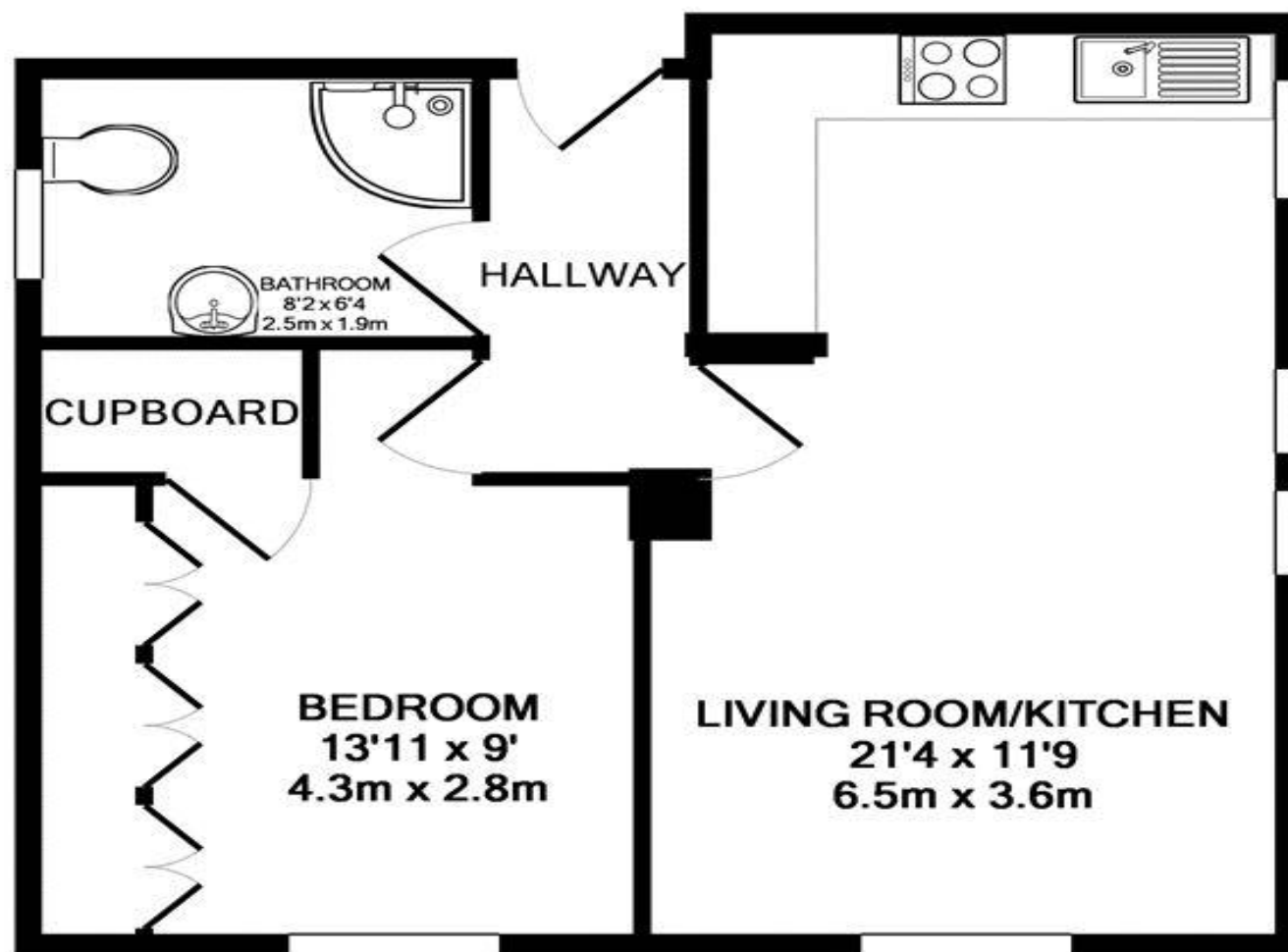
4.9 Stars | 132 Reviews

Find us on social media

 vitaproperties

 VitaProperties

 VitaProperties



TOTAL APPROX. FLOOR AREA 47.4 SQ.M. (510 SQ.FT.)

Whilst every attempt has been made to ensure the accuracy of the floor plan contained here, measurements of doors, windows, rooms and any other items are approximate and no responsibility is taken for any error, omission, or mis-statement. This plan is for illustrative purposes only and should be used as such by any prospective purchaser. The services, systems and appliances shown have not been tested and no guarantee as to their operability or efficiency can be given

Made with Metropix ©2012

